

UNCLASSIFIED



Environment, Safety and Health (ESH) Report

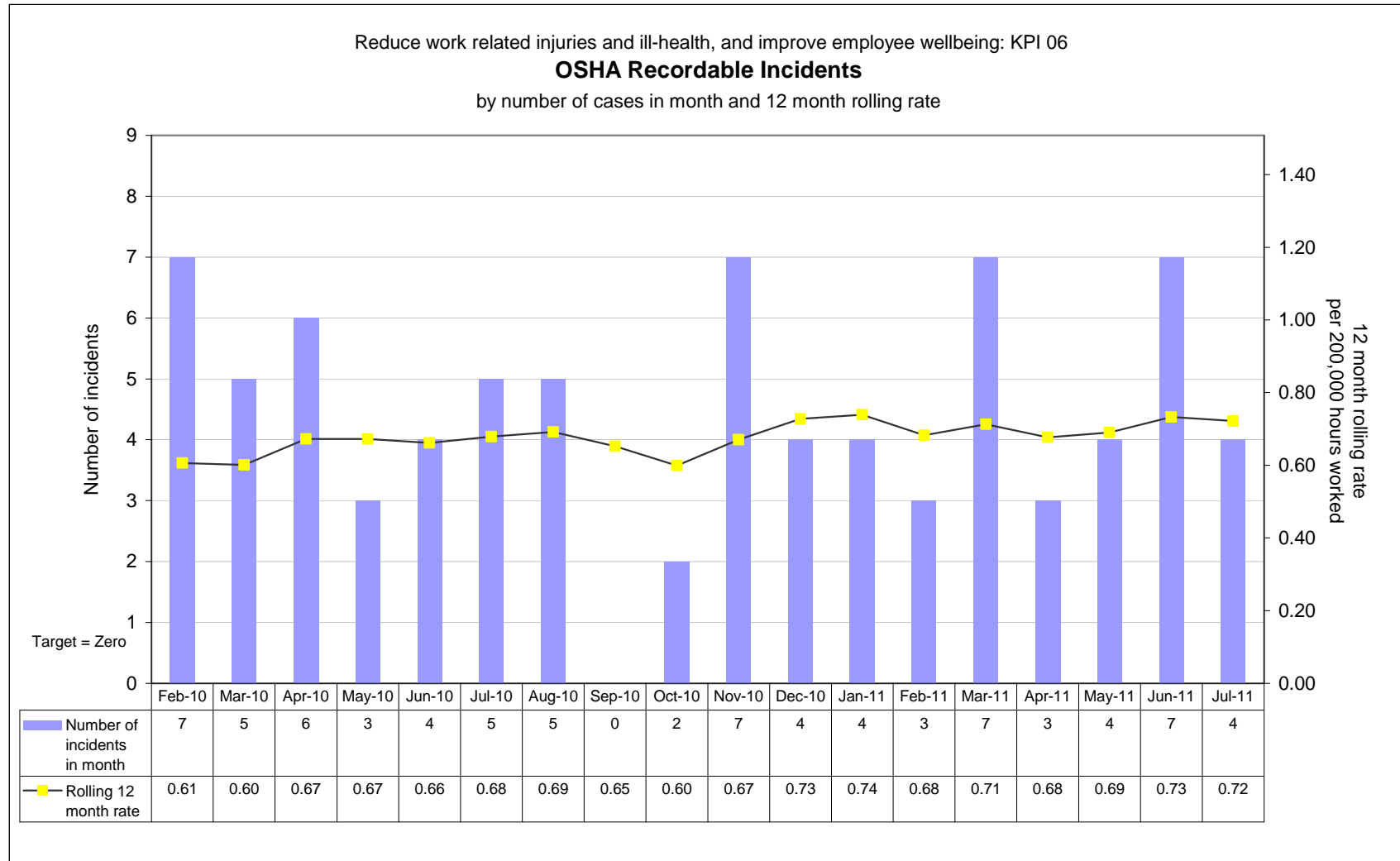


Perfect Days

- On a Perfect Day nobody is hurt, we receive no community complaints, we have no security breaches, we do not breach our environmental permit conditions, and there is no loss of our process safety controls:
 - May 2011 – 15
 - June 2011 – 16
 - July 2011 - 15

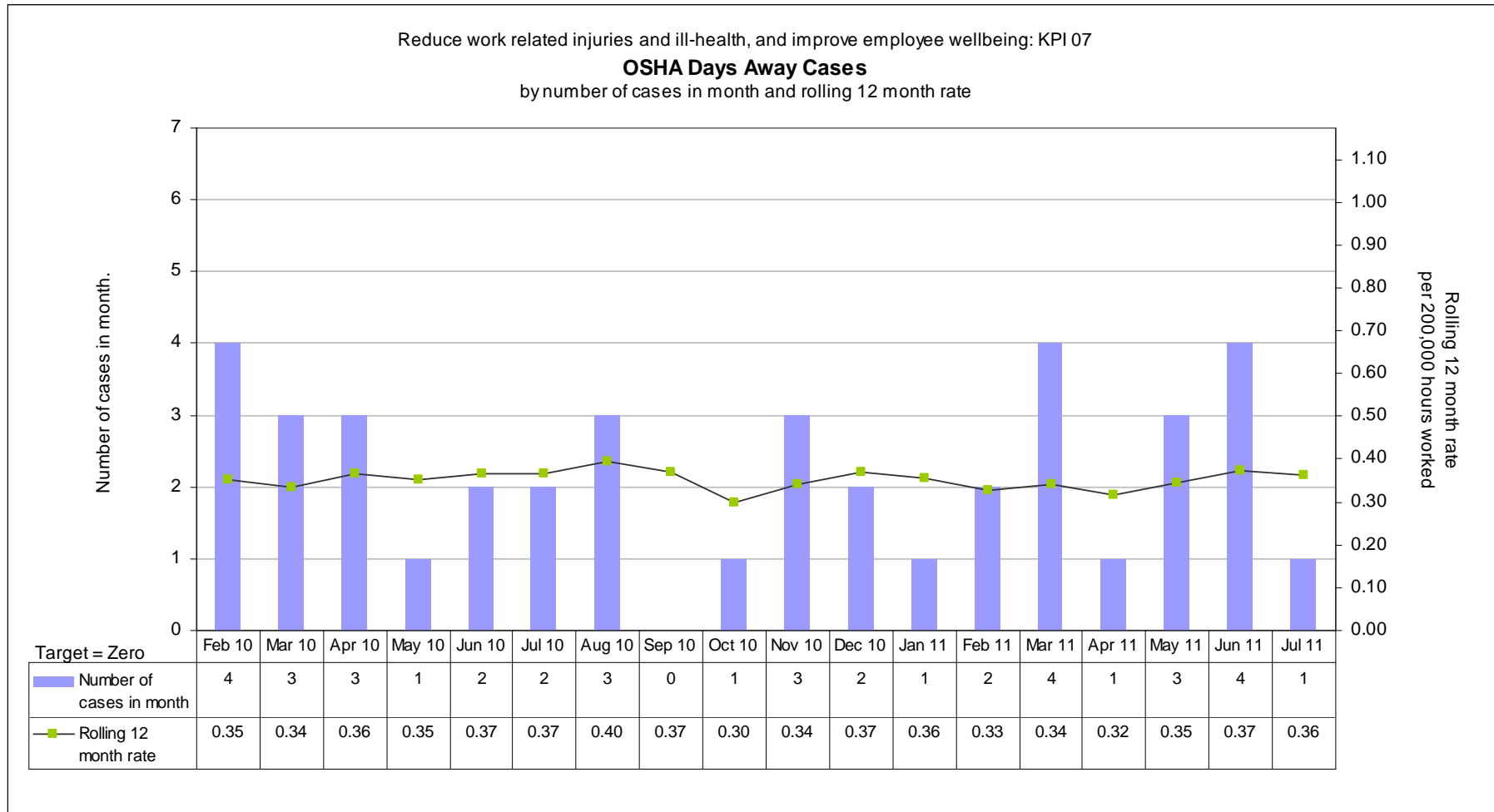


OSHA Recordable Incidents



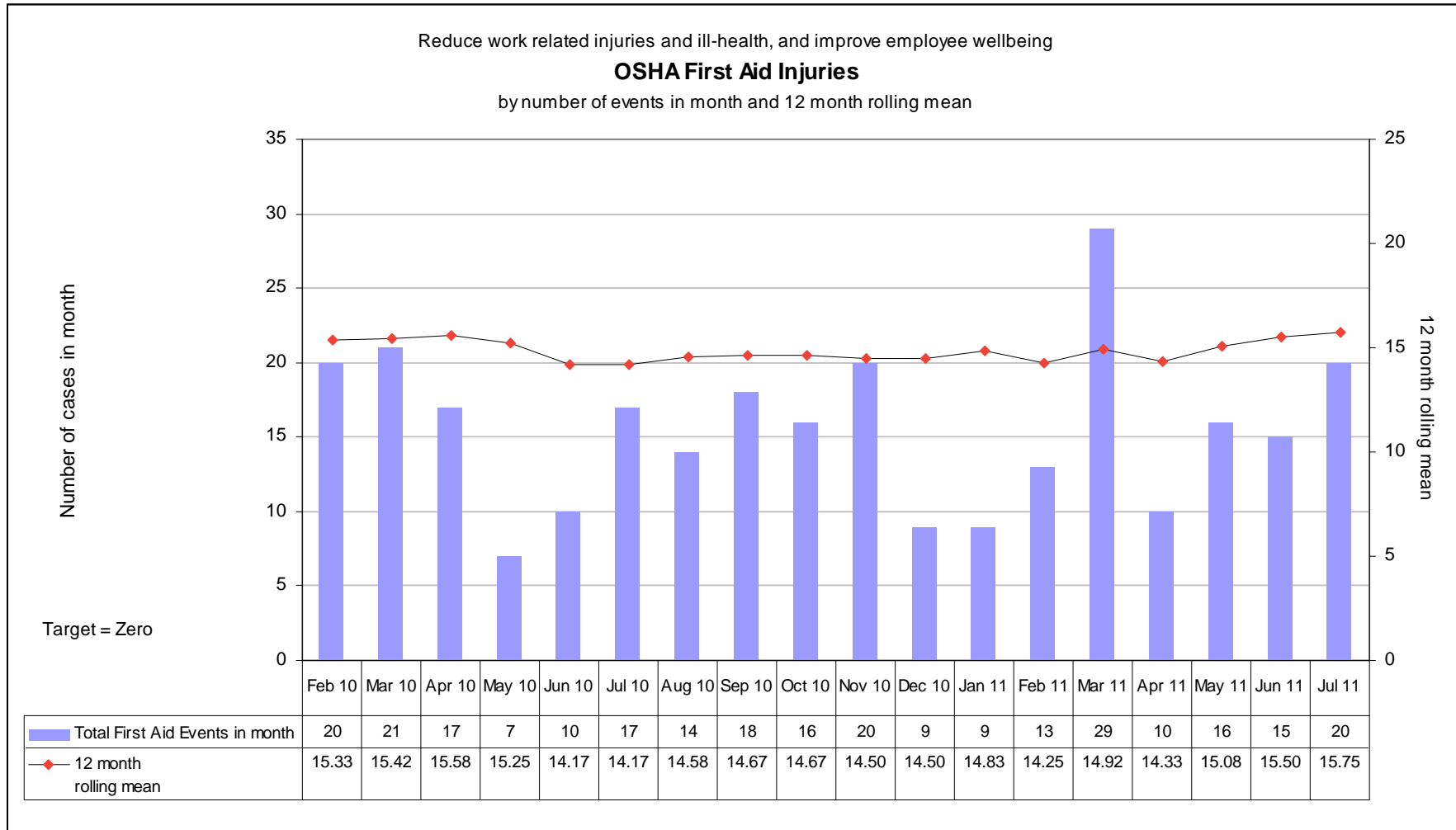


OSHA Days Away Cases



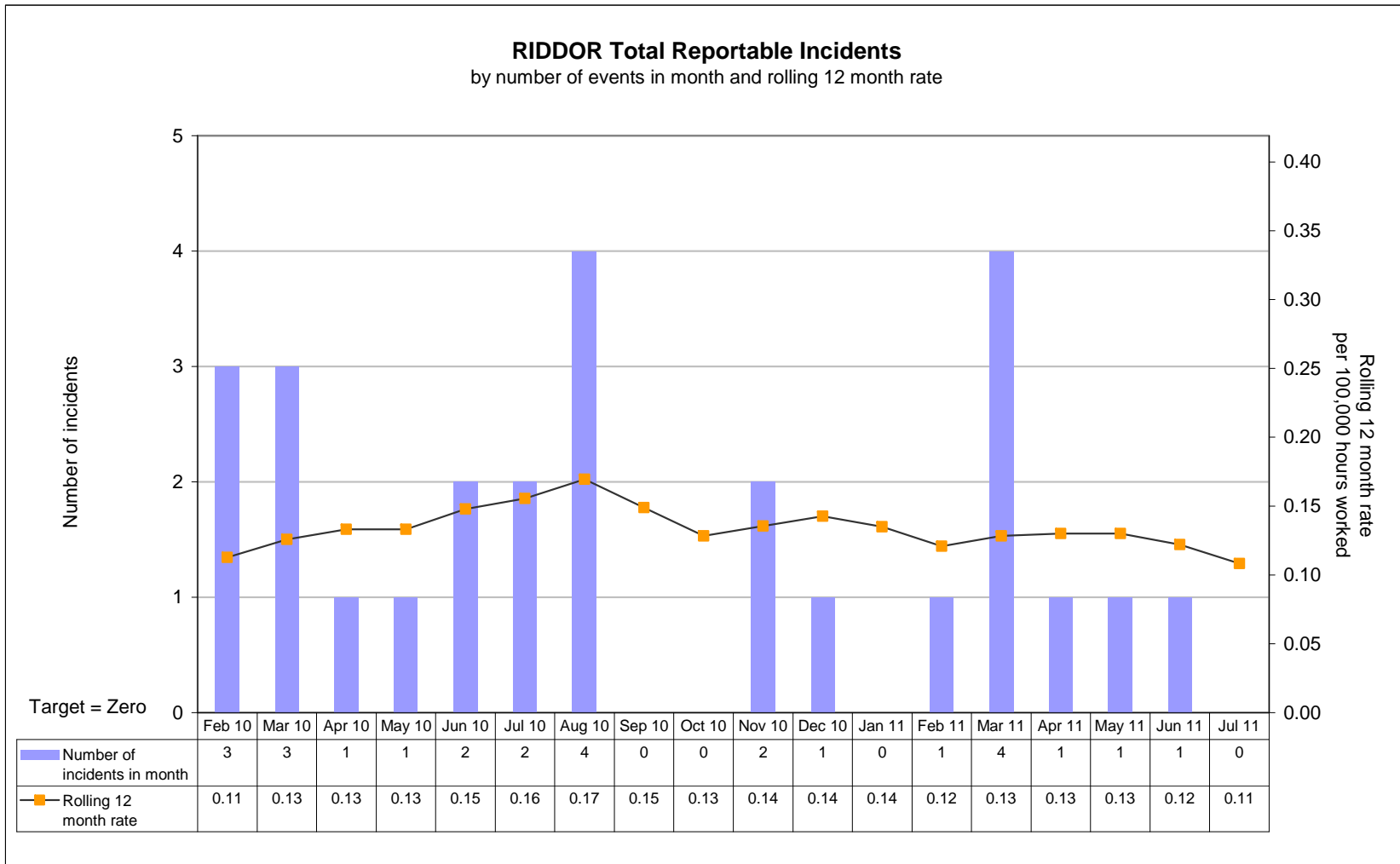


OSHA First Aid Injuries





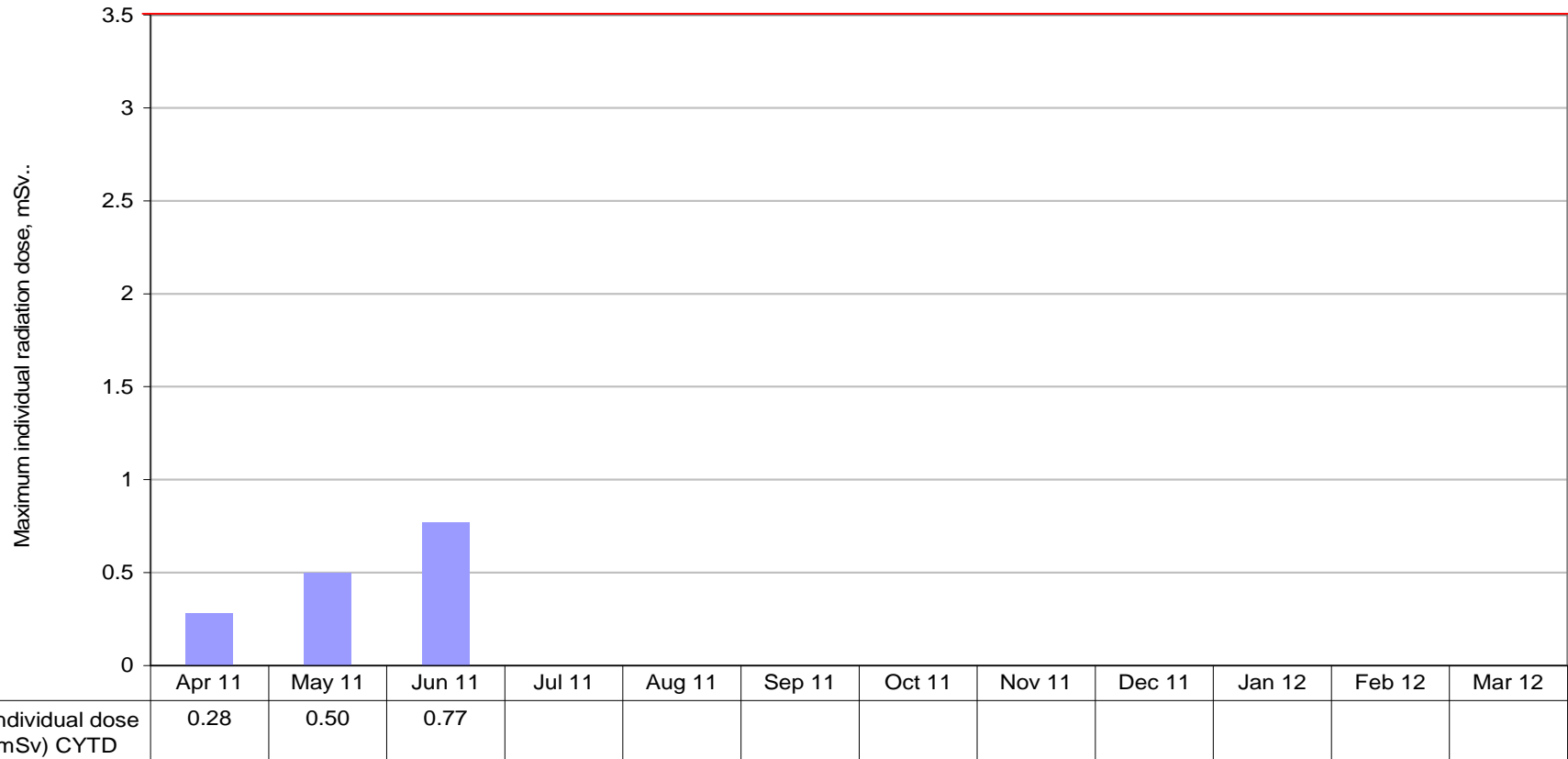
RIDDOR Reportable Incidents





Reduce work related injuries and ill-health, and improve employee wellbeing: KPI 10
Maximum individual radiation dose against the anticipated work program
 Contract Year to date

CY 12 objective = 3.5 (mSv) maximum



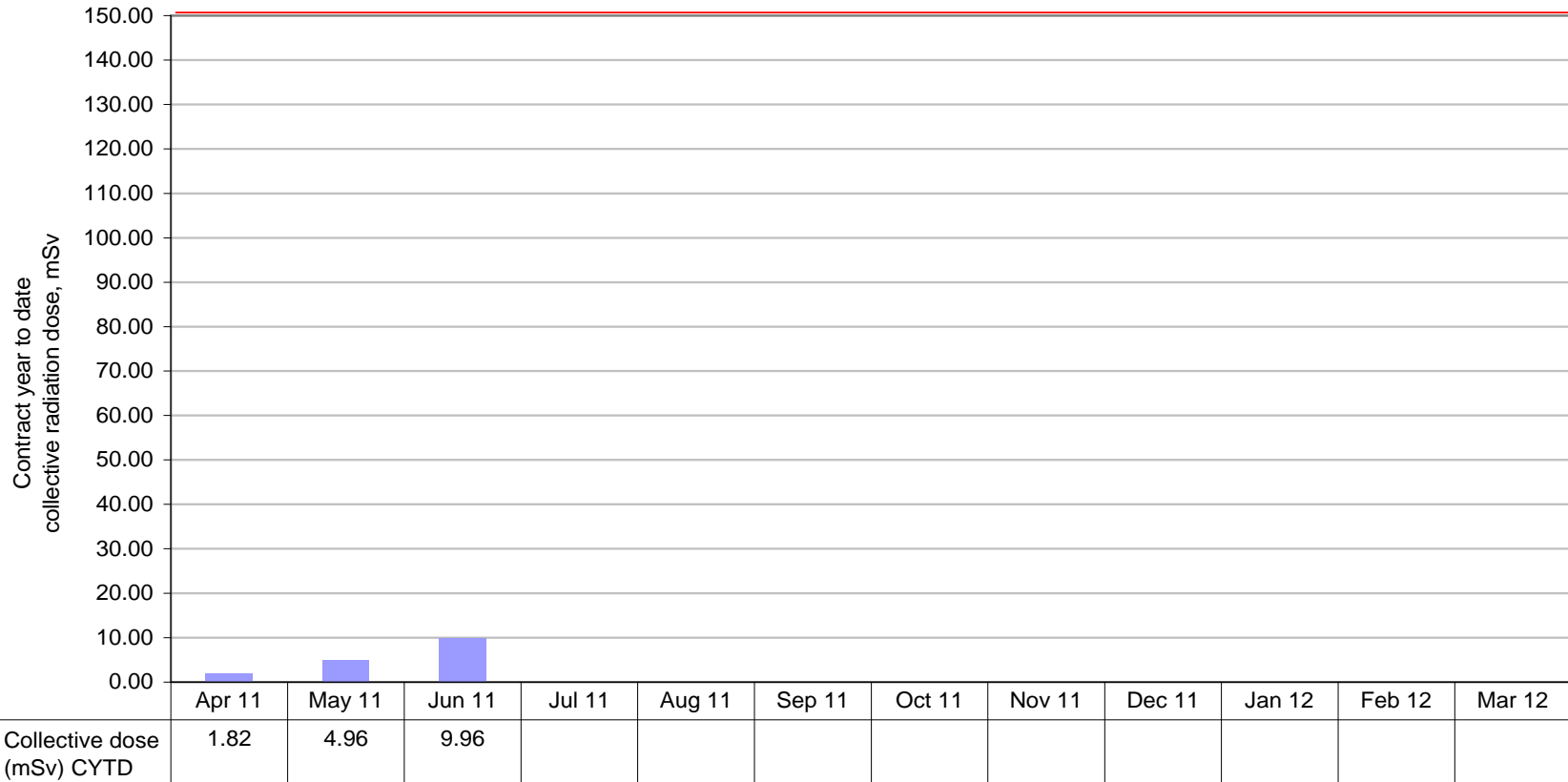


Reduce work related injuries and ill-health, and improve employee wellbeing: KPI 11

Collective total radiation dose for higher exposed groups

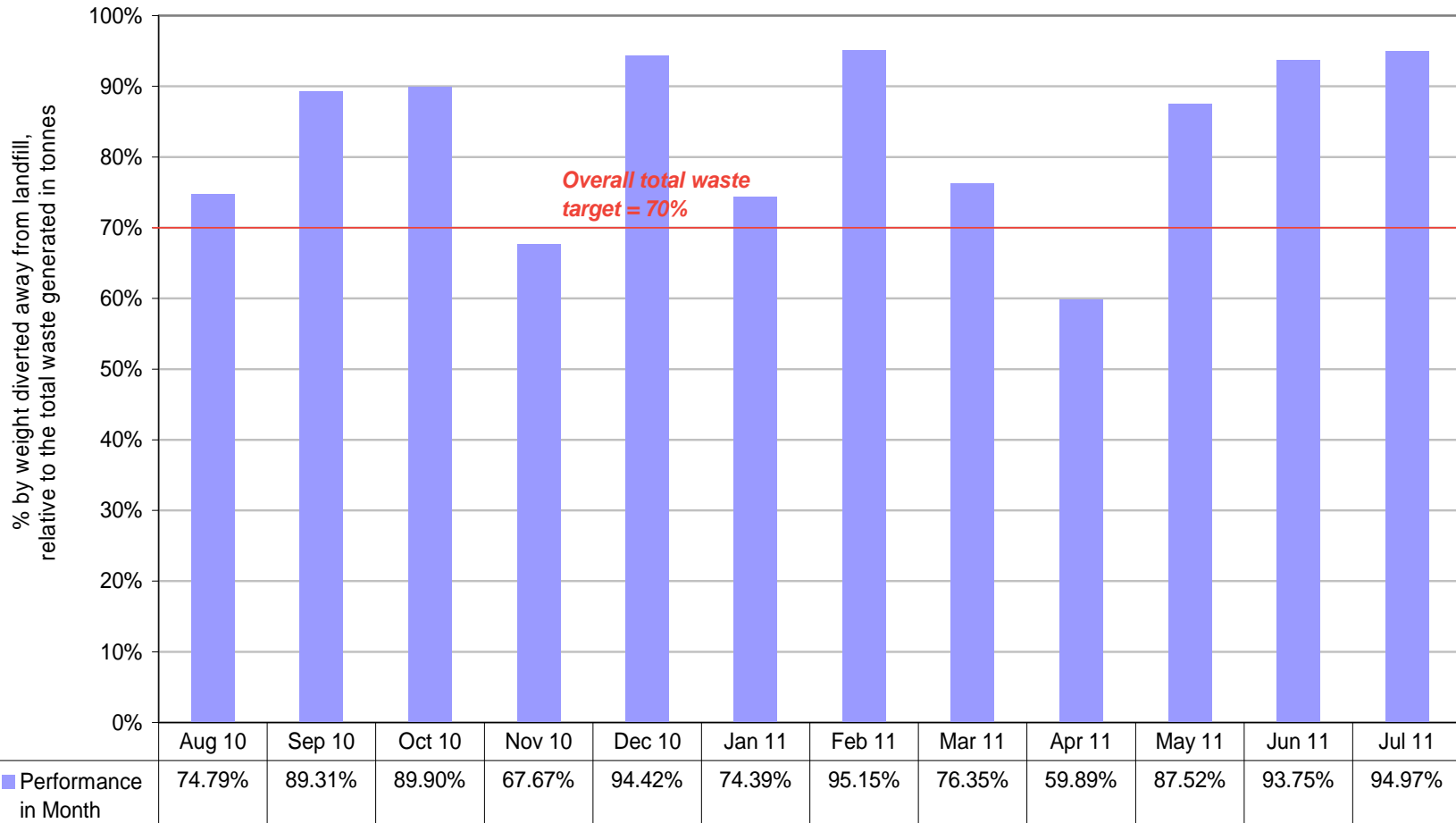
Contract Year to date

CY12 objective = 152 man mSv maximum





Reduce environmental impact: KPI 14
Overall total waste diverted away from landfill
 (and therefore available for refuse, recycle or recovery)





Public Dose Assessment

Discharge	Aldermaston		Burghfield		Guidance Levels
	Q2 2011	Jul 10 to Jun 11	Q2 2011	Jul 10 to Jun 11	
Atmosphere	6 nSv (0.000006 mSv)	23 nSv (0.000023 mSv)	0.4 pSv (0.0000000004 mSv)	2 pSv (0.000000002 mSv)	0.5 mSv
Trade Effluent	8 nSv (0.000008 mSv)	24 nSv (0.000024 mSv)			0.5 mSv
Aldermaston Stream	0.1 nSv (0.0000001 mSv)	0.4 nSv (0.0000004 mSv)			0.5 mSv

- The calculated doses represent minute fractions of the dose constraint set by the Environment Agency of 0.5 mSv per year for a nuclear site
- The model concludes that there is no hazard to members of the public