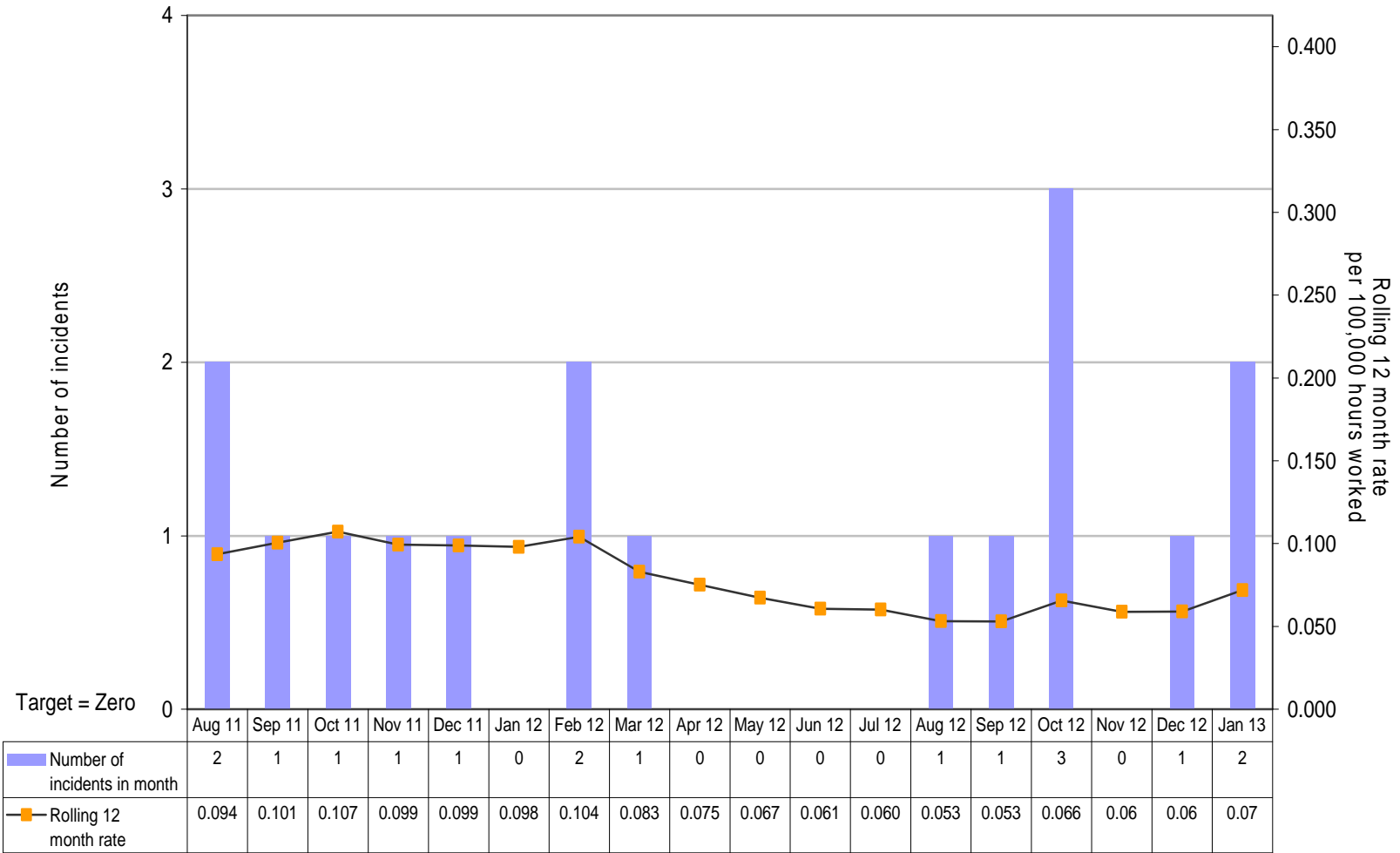


Environment, Safety, Health and Quality (ESH&Q) Report

RIDDER Total Reportable Incidents

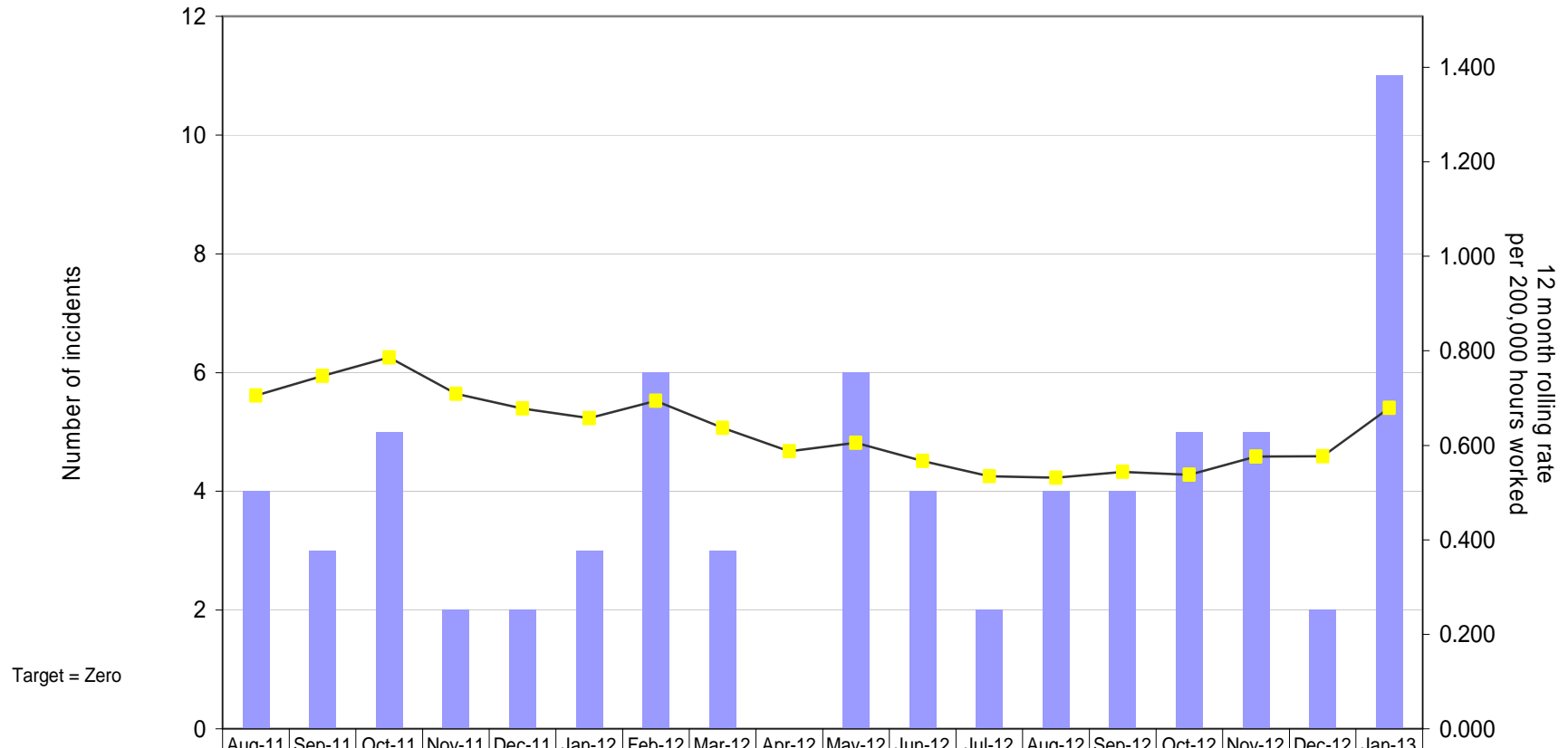
by number of events in month and rolling 12 month rate



Reduce work related injuries and ill-health, and improve employee wellbeing

OSHA Recordable Incidents

by number of cases in month and 12 month rolling rate

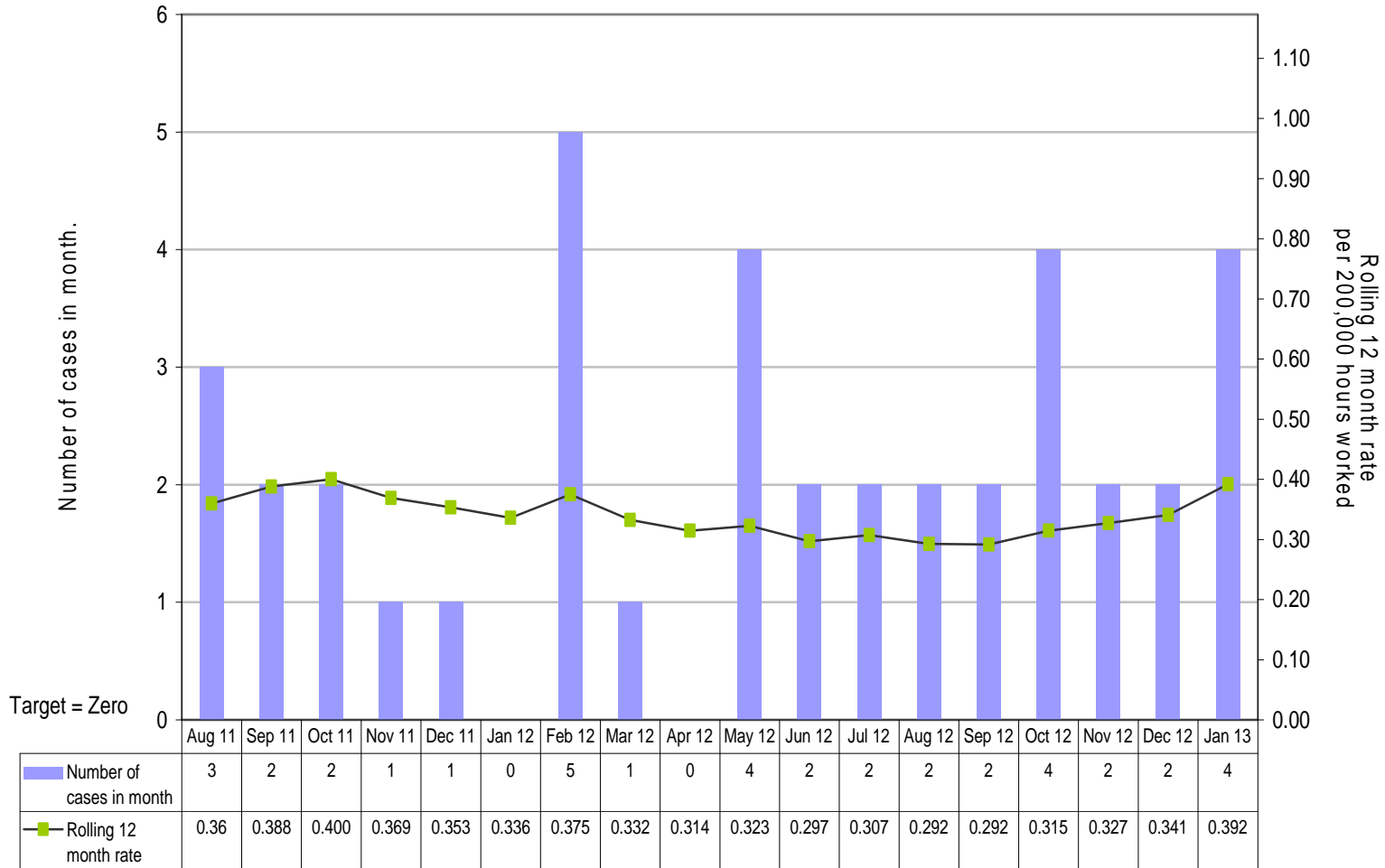


<div style="display: flex; align-items: center;"> <div style="width: 15px; height: 15px; background-color: blue; margin-right: 5px;"></div> Total no. of events in month </div>	4	3	5	2	2	3	6	3	0	6	4	2	4	4	5	5	2	11
<div style="display: flex; align-items: center;"> <div style="width: 15px; border-bottom: 1px solid black; margin-right: 5px;"></div> Rolling 12 month rate </div>	0.705	0.747	0.786	0.709	0.678	0.658	0.694	0.637	0.588	0.605	0.567	0.534	0.532	0.544	0.538	0.576	0.577	0.679

Reduce work related injuries and ill-health, and improve employee wellbeing

OSHA Days Away Cases

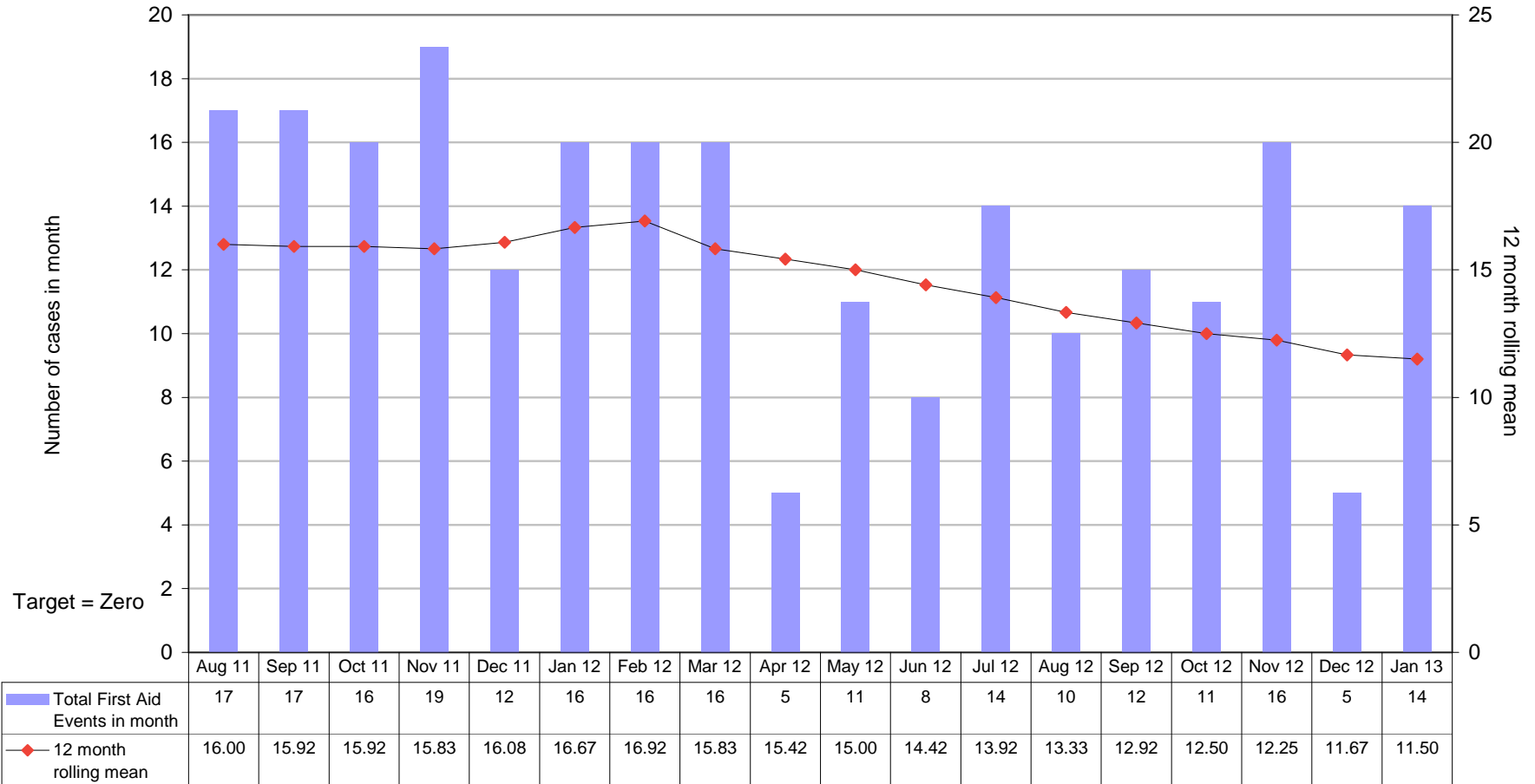
by number of cases in month and rolling 12 month rate



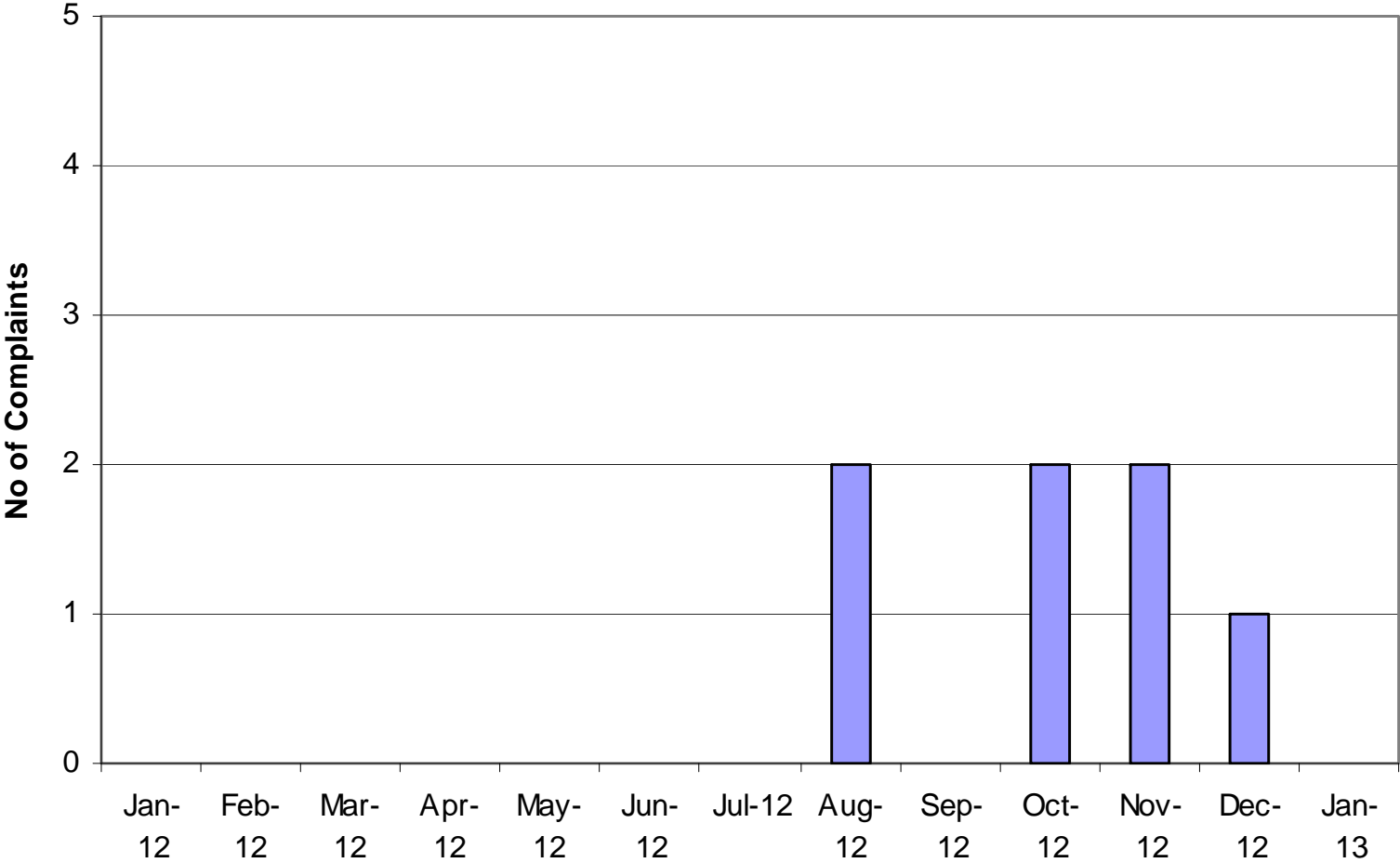
Reduce work related injuries and ill-health, and improve employee wellbeing

OSHA First Aid Injuries

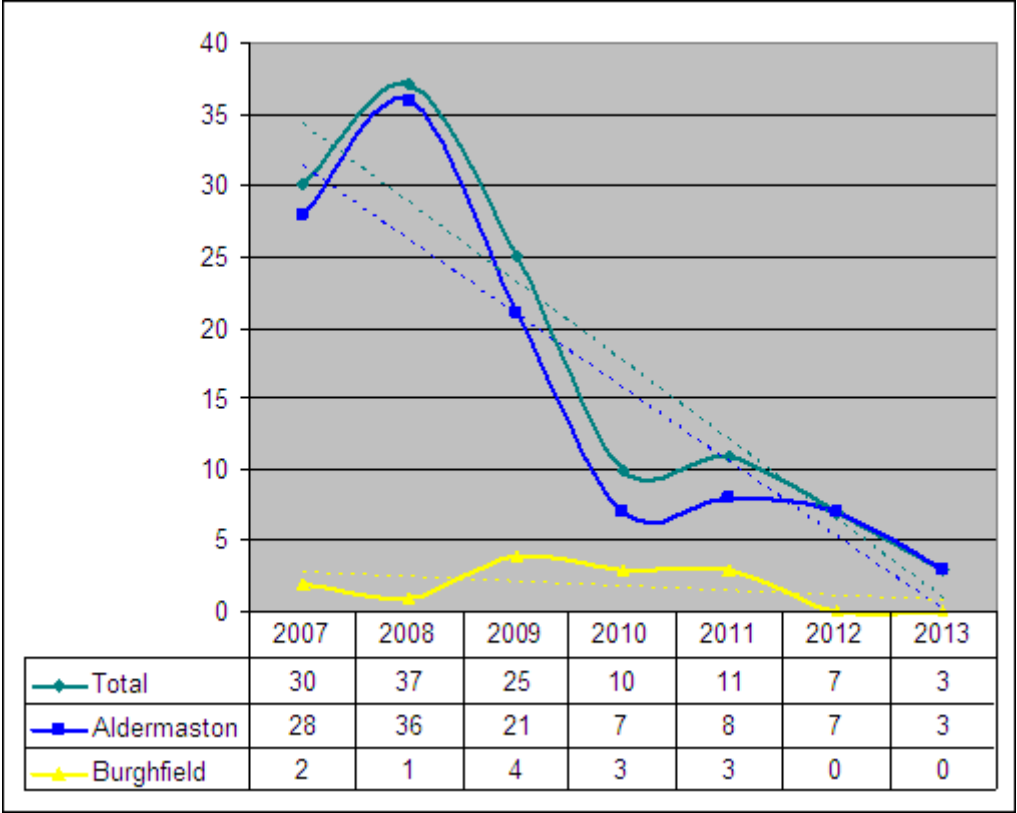
by number of events in month and 12 month rolling mean



Community Complaints



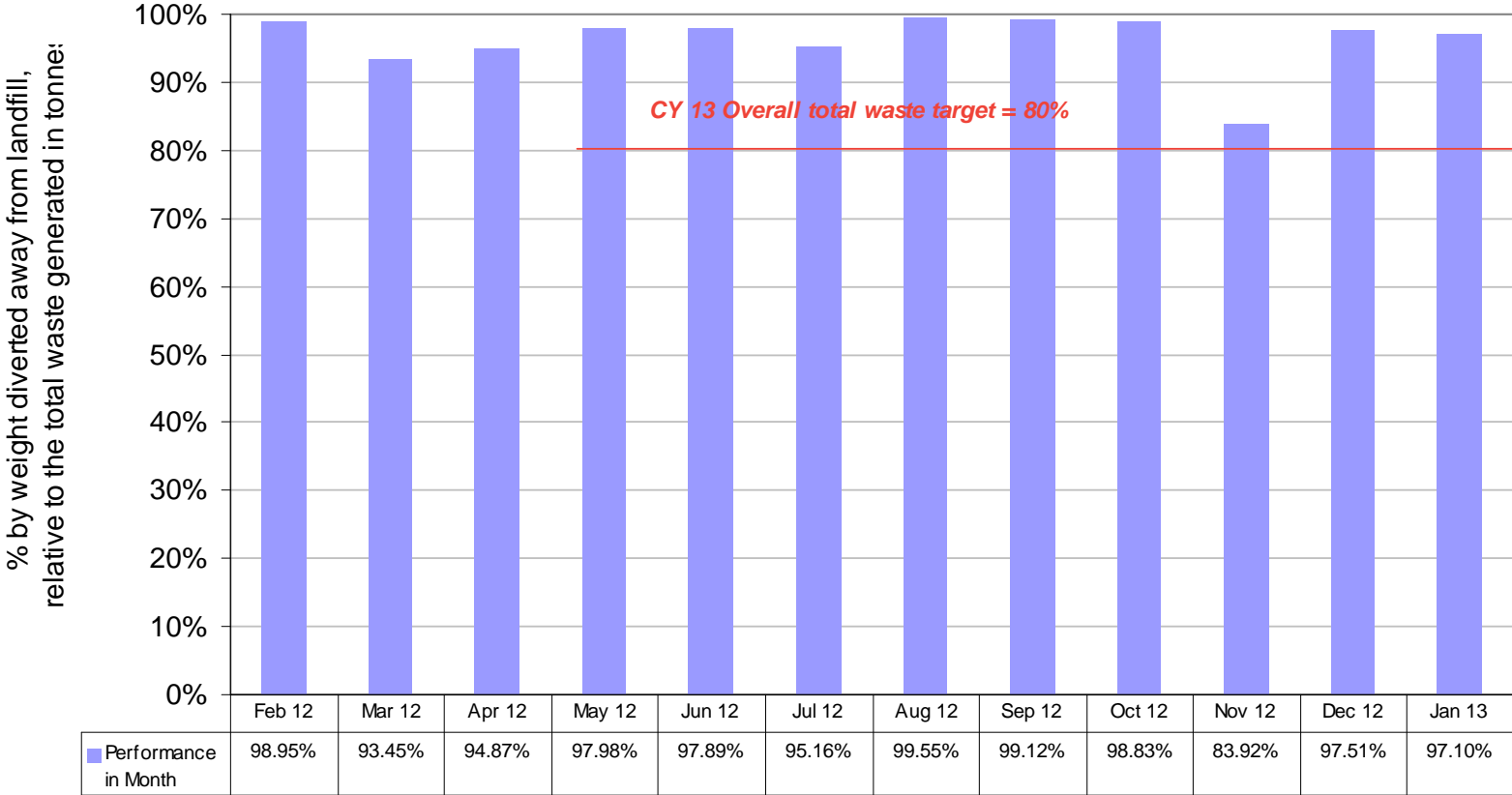
Community Complaints



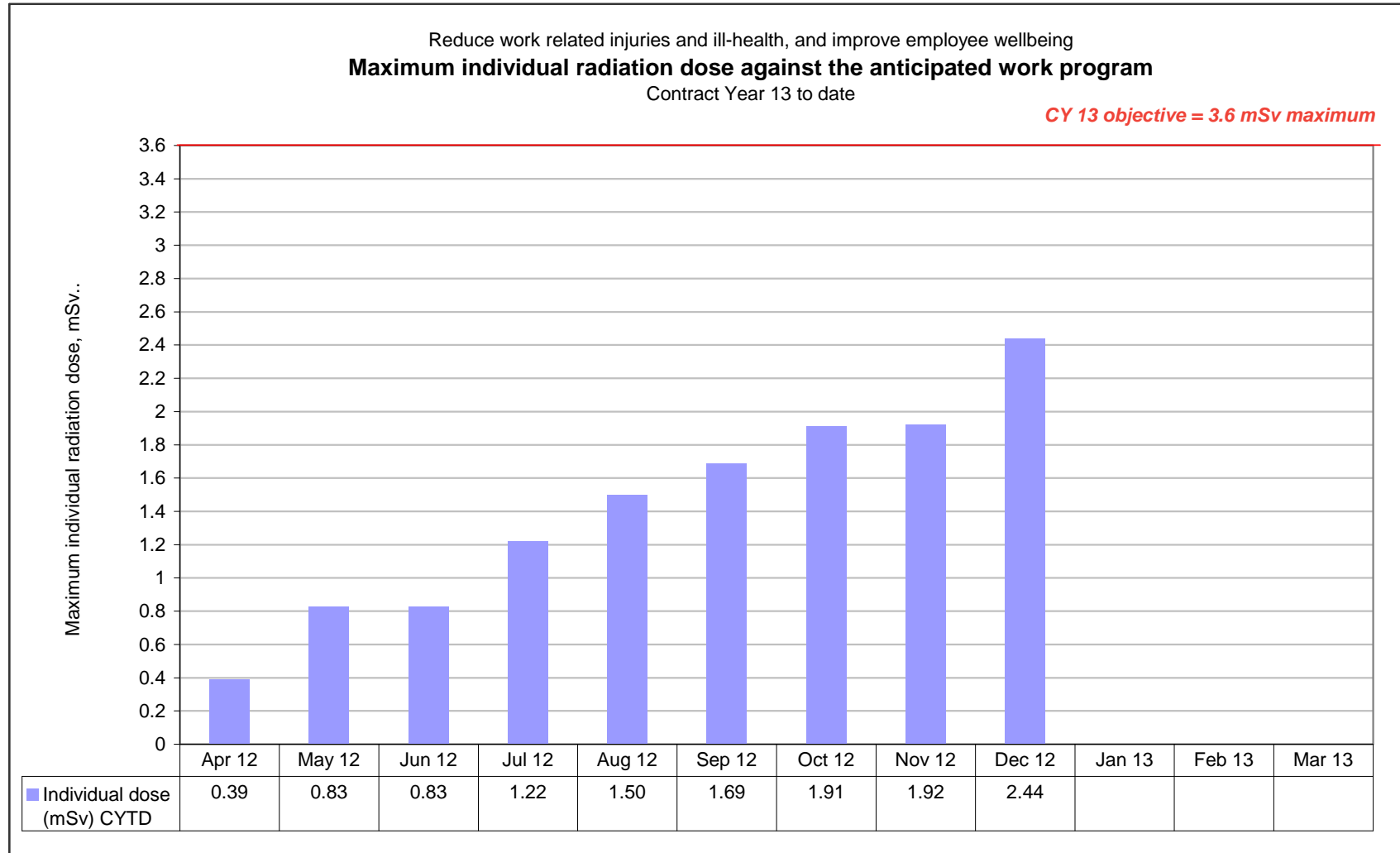
Reduce environmental impact

Overall total waste diverted away from landfill

(and therefore available for refuse, recycle or recovery)



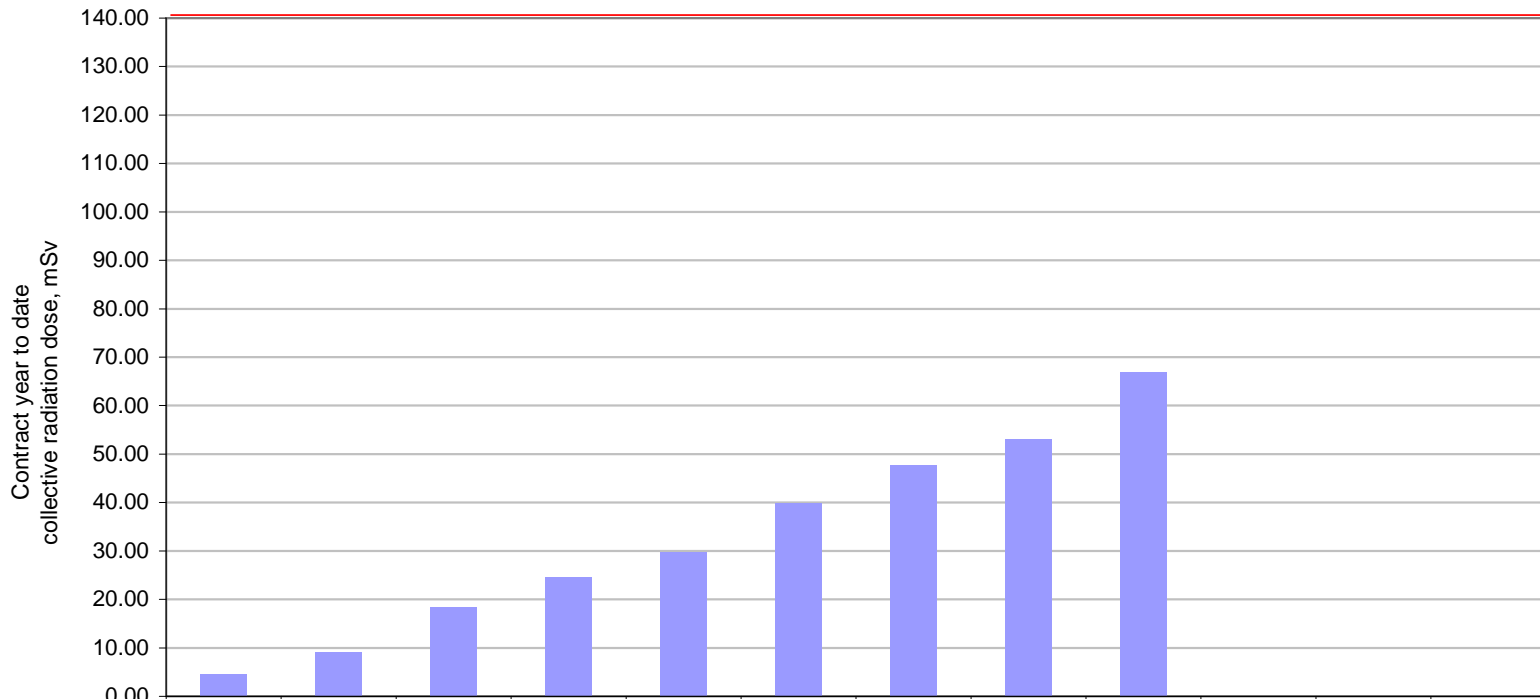
Maximum Individual Radiation Dose v Objective



Collective Radiation Dose v Objective

Reduce work related injuries and ill-health, and improve employee wellbeing
Collective total radiation dose for higher exposed groups
 Contract Year 13 to date

CY 13 objective = 140 man mSv maximum



	Apr 12	May 12	Jun 12	Jul 12	Aug 12	Sep 12	Oct 12	Nov 12	Dec 12	Jan 13	Feb 13	Mar 13
■ Collective dose (mSv) CYTD	4.55	9.07	18.38	24.51	29.80	39.82	47.68	53.09	66.95			

Public Dose Assessment

Discharge	Aldermaston		Burghfield		Guidance Levels
	Q4 2012	JAN 12 to DEC 12	Q4 2012	JAN 12 to DEC 12	
Atmosphere	61 nSv (0.000061 mSv)	250 nSv (0.00025 mSv)	0.5 pSv (0.0000000005 mSv)	2 pSv (0.000000002 mSv)	0.5 mSv
Trade Effluent	4 nSv (0.000004 mSv)	21 nSv (0.000021 mSv)			0.5 mSv
Aldermaston Stream	0.1 nSv (0.0000001 mSv)	0.4 nSv (0.0000004 mSv)			0.5 mSv

- The calculated doses represent minute fractions of the dose constraint set by the Environment Agency of 0.5 mSv per year for a nuclear site
- The model concludes that there is no hazard to members of the public