

CERTIFIED	D.O.	DRAWING OFFICE REFERENCE	<p>© Crown Copyright ()</p> <p>This document is of United Kingdom origin and contains proprietary information which is the property of the Secretary of State for Defence. It is furnished in confidence and may not be copied, used or disclosed in whole or in part without prior written consent of the Intellectual Property Rights Group, IPR-PL1, Ministry of Defence, Abbey Wood, Bristol, BS34 8JH, England</p>
CHECKED			
DRAWN			

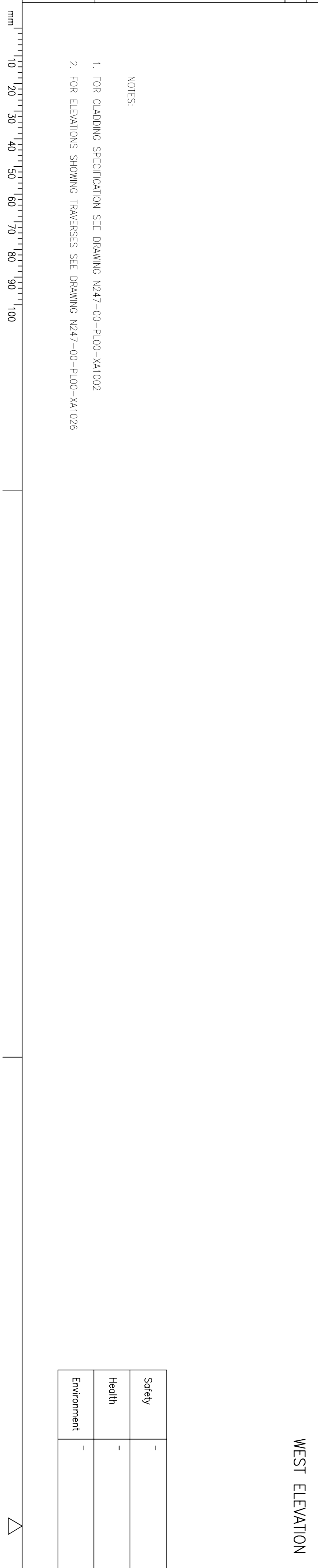
© Crown Copyright ()

This document is of United Kingdom origin and contains proprietary information which is the property of the Secretary of State for Defence. It is furnished in confidence and may not be copied, used or disclosed in whole or in part without prior written consent of the Intellectual Property Rights Group.

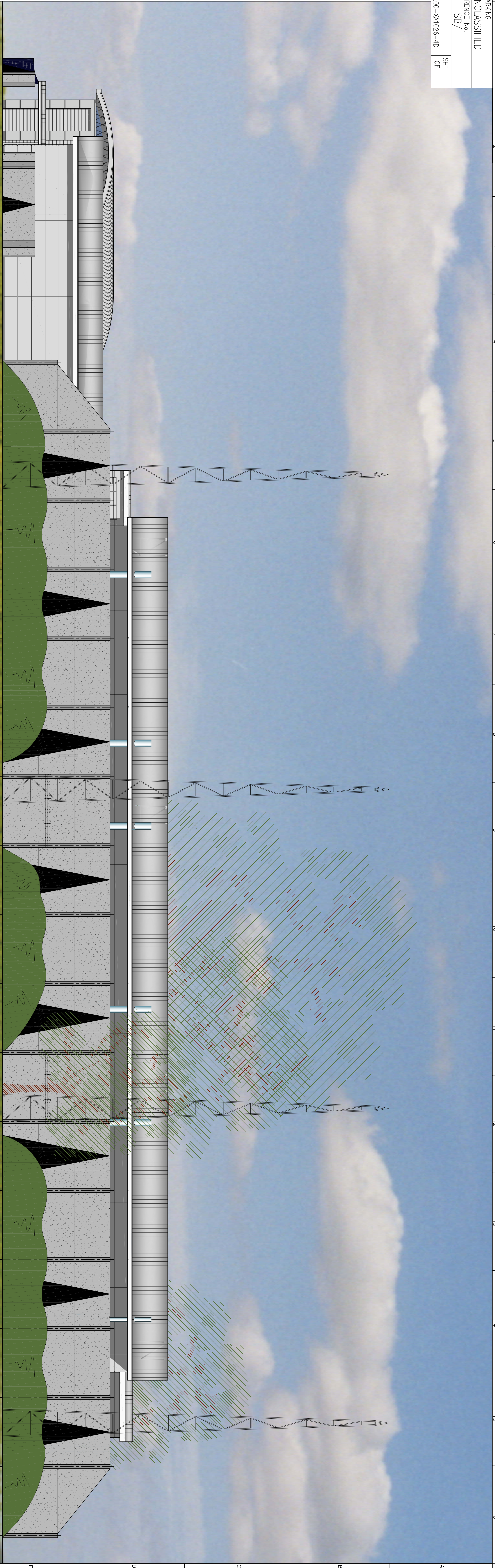
IPR-PL1, Ministry of Defence, Abbey Wood, Bristol, BS34 8JH, England

NOTES:

1. FOR CLADDING SPECIFICATION SEE DRAWING N247-00-PL00-XA1002
2. FOR ELEVATIONS SHOWING TRAVERSES SEE DRAWING N247-00-PL00-XA1026



Safety	-
Health	-
Environment	-



NORTH ELEVATION



WEST ELEVATION

[illegible]