

PROTECTIVE MARKING UNCLASSIFIED	1	2	3	4	5	6	7	8	9	10
DRAWING REFERENCE No. SB/										
DRAWING No. N247-00-PL00-XA1005-7D	SHT OF									

USED ON

© Crown Copyright (—)
This document is of United Kingdom origin and contains proprietary information which is the property of the Secretary of State for Defence. It is furnished in confidence and may not be copied, used or disclosed in whole or in part without prior written consent of the Intellectual Property Rights Group.
IPR-PL1, Ministry of Defence, Abbey Wood, Bristol, BS34 8JH, England

DRAWING OFFICE
REFERENCE
1

DO. —

—

—

—

—

—

—

—

—

—

—

—

—

—

—

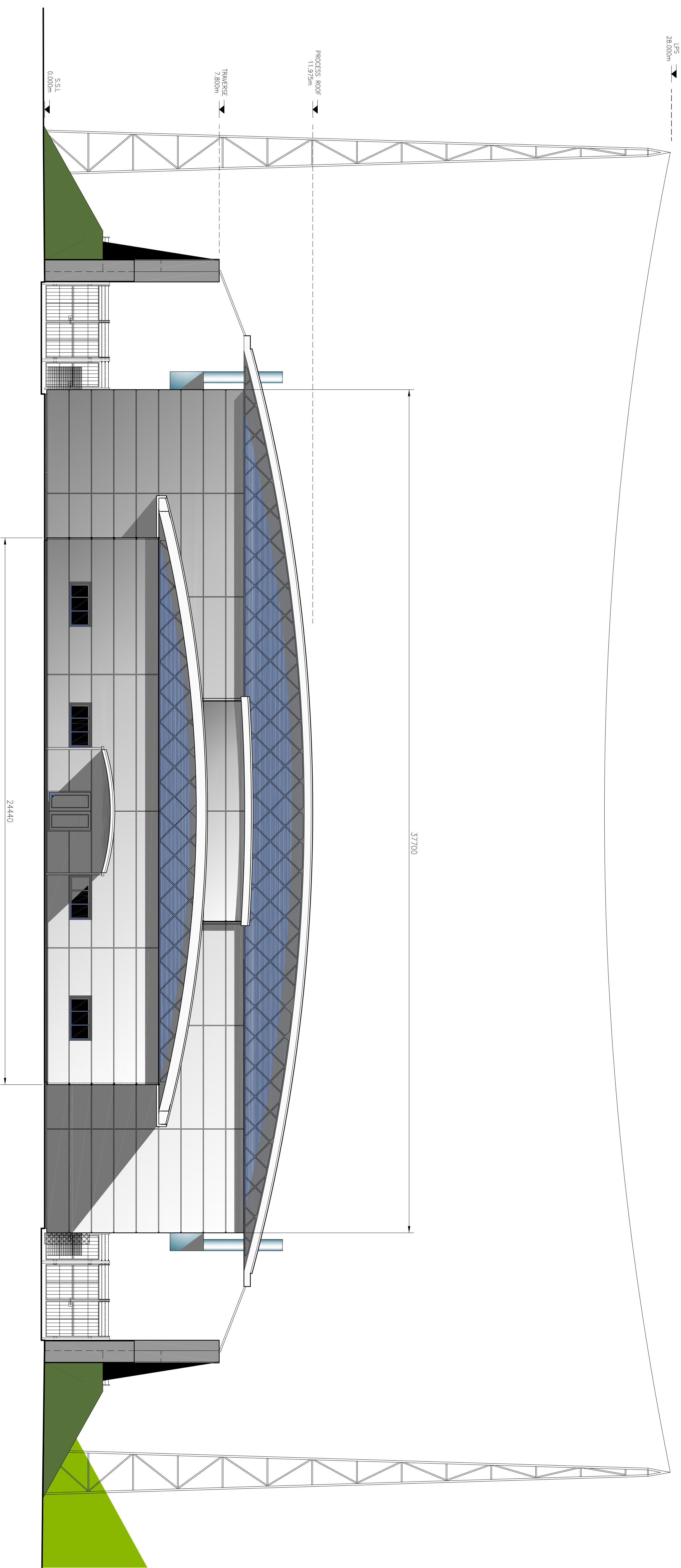
CERTIFIED	KNC
CHECKED	ZM
DRAWN	JPM

EXTERNAL FINISHES

Roof to be Kozip mill finish aluminium standing seam.
Wall cladding to High level walls, diagonal rainscreen cladding Eternit Laminio external high pressure laminate Colour – Metallic 0330 – brushed navy.
Horizontal panels
Kingspan Optima composite insulated panels,
Colour – Colourcoat PVD silver metallic.
Windows to be Specialist blast resistant to match diagonal cladding.
Engineering Blue Brickwall to Building Entrance.
Traverse Steelwork to be galvanneal.
Finishes to External Doors to match wall cladding – silver metallic.
Finishes to Roller Shutter Door to match wall cladding – silver metallic.
External Louvers to be silver metallic.
Concrete finish to Traverse Panels – Exposed Aggregate.
HMC Chimneys and Housings to be Stainless Steel.

NOTES:

1. FOR CLADDING SPEC REFER TO DRAWING N247-00-PL00-XA1002.
2. FOR ELEVATIONS SHOWING TRAVERSES SEE DRAWING N247-00-PL00-XA1009.



Safety	—
Health	—
Environment	—

PRINT CONTROL No.

N

PROTECTIVE MARKING

UNCLASSIFIED

DRAWING REFERENCE No.

SB/

DRAWING No.

N247-00-PL00-XA1005-7D

SHT

OF

A 1