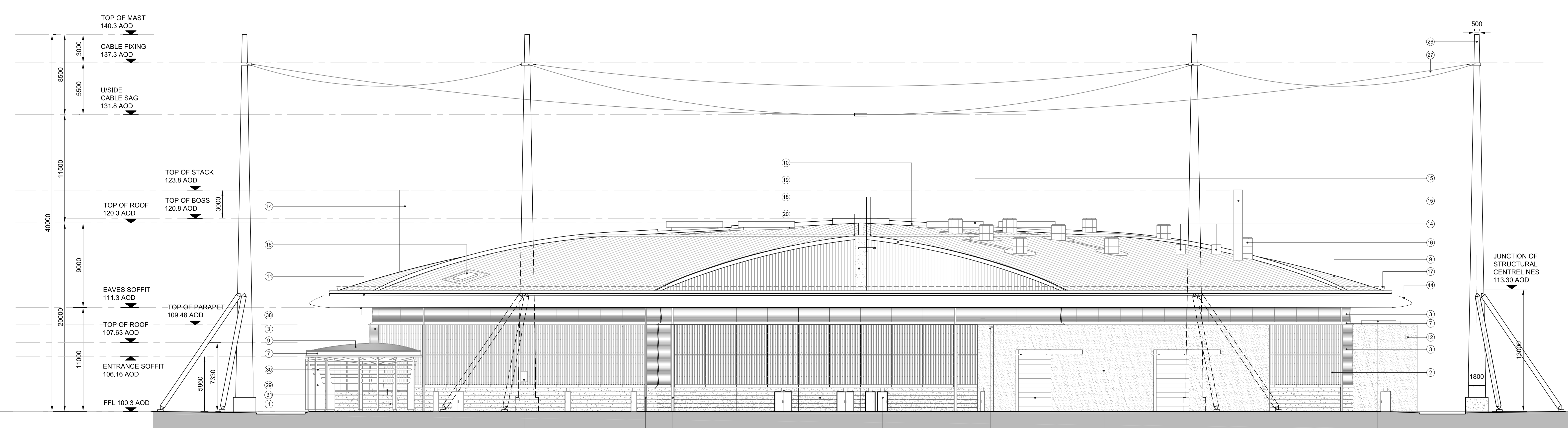
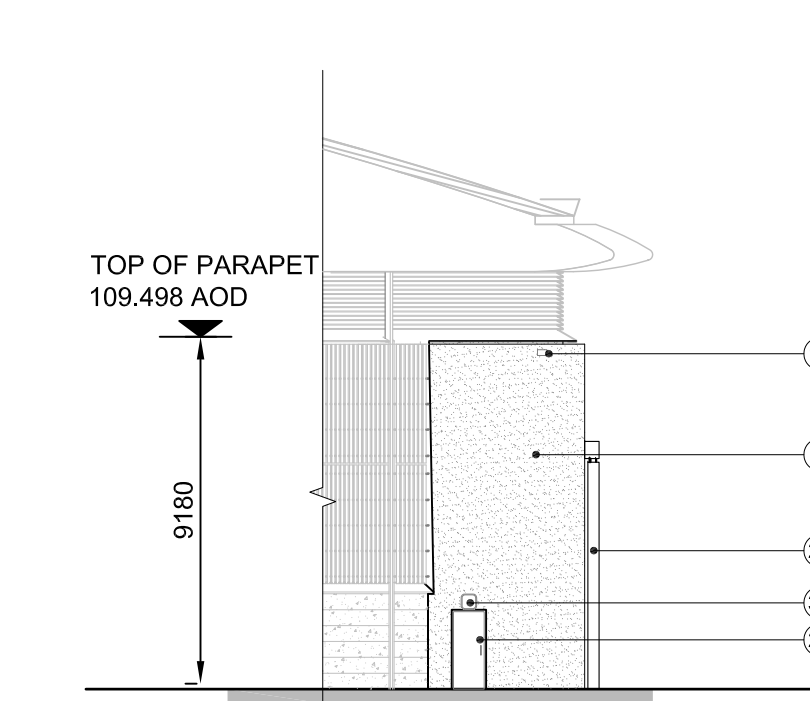


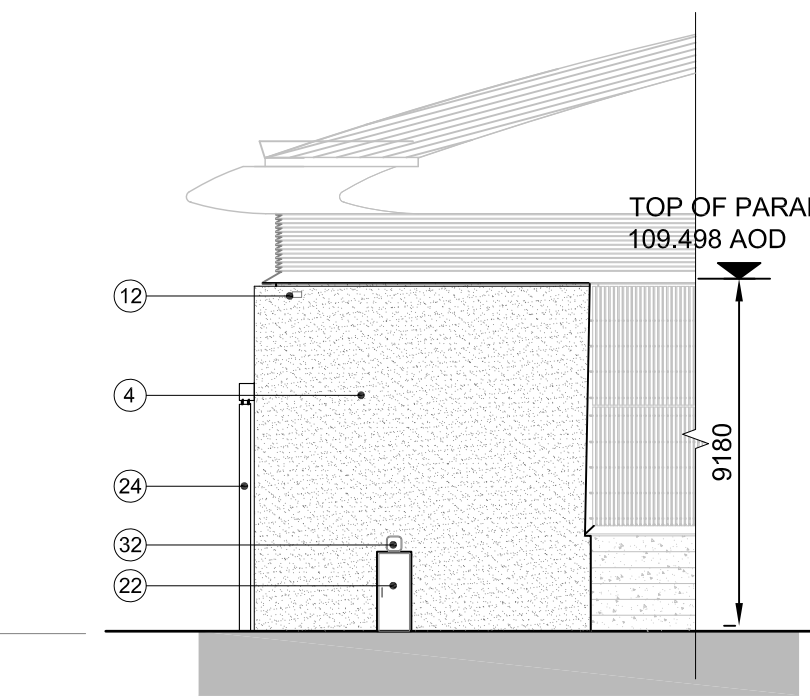
ELEVATION C  
Scale: 1:200  
5052



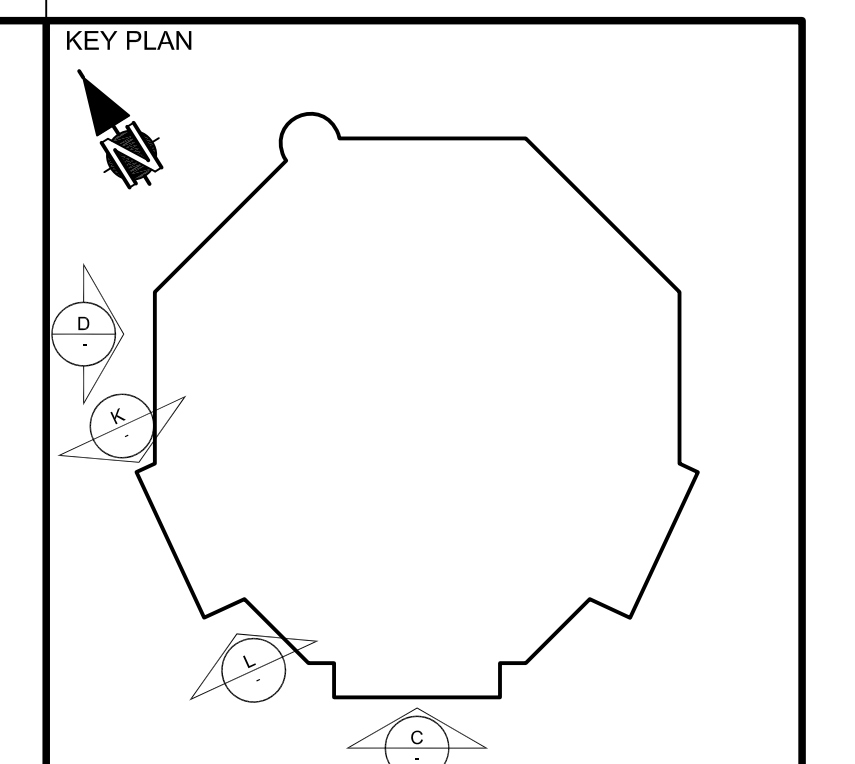
ELEVATION D  
Scale: 1:200  
5052



ELEVATION K  
Scale: 1:200  
5052



ELEVATION L  
Scale: 1:200  
5052



**SAFETY, HEALTH AND ENVIRONMENTAL INFORMATION**

For details of hazards and general risks, to be read in conjunction with these notes, see Drawing No. HYDRUS-ATK-300-010

In addition to the risks normally associated with the types of work detailed on this drawing, note the following risks and information:

CONSTRUCTION	1
MAINTENANCE	11
DEMANTLING/DEMOLITION (Future)	1
ENVIRONMENTAL	1

It is assumed that all works will be carried out by a competent contractor working, where appropriate, to an approved method statement.

**NOTES**

Routine maintenance access to the operation building roof, will be via access stairs to the roof maintenance hatch and on to the roof mounted walkway. Operative safety to be secured using fall arrest latching system as indicated on the roof plan. 'A-HYDRUS-ATK-01-XX-DRW-AR-270-111-00504'

- Key To Materials**
- Reconstituted stone precast pith colour grey with textured finish, and with single precast corner ribs and continuous horizontal strikes, top finishing in mill finished Aluminium, with vertical joints
  - Timber rainwater cladding (European Larch weathered Grade 1, grown in UK) with vertical mill finish Aluminium tapered fins, and grain to timber protected with horizontal Aluminium flashings, black anodised support rails with cork insulation behind.
  - Aluminium mill finish louvers
  - White smooth synthetic render system
  - Clear glazing in silver anodised Aluminium frames
  - Insulated glass spandrel panels with textured clear glass outer pane and coloured inner pane in silver anodised Aluminium frames
  - Roof edge upstand and fascia in grey anodised Aluminium
  - Green roof to be planted with mixed sedum species, in stone ballast
  - Standing seam roof system in zinc coated Aluminium. Orientation of sheeting indicated by direction of lines on roof plan
  - Roof rib upstands in zinc coated Aluminium
  - Gutter in mill finished Aluminium
  - Rainwater outlets, overflow chutes and down pipes in galvanised steel, colour finish
  - Surpices for natural light, clear acrylic with Aluminium mill finish frames
  - Exhaust stack with zinc cladding
  - Roof ventilators in Aluminium mill finish
  - Smoke ventilators in Aluminium mill finish
  - Shoegrant, cables and fixings in galvanised steel
  - Mastacle system in stainless steel
  - Roof maintenance access hatch in Aluminium mill finish
  - Roof maintenance walkways in Aluminium mill finish
  - Brise soleil in silver anodised Aluminium
  - Personnel doors, painted steel to match surrounding concrete pith or render colour, as appropriate
  - Louvre doors in Aluminium mill finish
  - Loading bay doors, painted steel to match surrounding concrete pith or render colour (grey or white), with matching overhead rail enclosure, where shown
  - Sectional insulated door, painted grey
  - Clear glazed doors with silver anodised Aluminium frames
  - Lightning protection masts white painted steel, with support struts and self-finished reinforced concrete base
  - Lightning protection system high level cable array, Aluminium cable with steel core. Connected at cross-over points and to the masts with natural finish non-ferrous rock clamps
  - Beams painted steel, to match zinc roof colour
  - Metal fins painted white to match lightning protection masts
  - Metal radused tubes painted white, with bird wire
  - Polished stainless steel handrail tubes
  - External lighting
  - Painted slabs in pre-cast concrete
  - Single ply membrane roof finish, grey colour
  - Precast base panels to match pith above, 150mm
  - Vent pipe, Aluminium mill finish
  - Horizontal wall mesh screen in galvanised steel
  - Soffit of eaves to roof, grey painted Aluminium panels
  - Aluminium, mill finished, vertical Aluminium fins
  - Metal slab boards in mill finished Aluminium, the width to match adjacent timber cladding, concealing louvers behind
  - Painted steel frame to match adjacent concrete pith or render (grey or white) colour
  - Clear polyethylene sheet canopy
  - Galvanised steel bicycle rack
  - Roof edge profile in grey anodised Aluminium, with panels to radial geometry. Max panel length 1.5m with flush joints
  - Yorkstone paved steps and landings
  - Lightning protection system finial, mill finished aluminium - 1m
  - Lightning protection system finial, mill finished aluminium - 1.5m

REV	COMMENTS	DATE	BY	CHKD
6	For Planning Issue	30/04/10	ML	DO
5	Door Louvre Arrivals	13/03/10	ML	DO
4	For Planning Issue	04/12/09	ML	DO
3	For Planning Issue	03/11/09	ML	DO
2	For Planning Issue	01/09/09	ML	DO
1	Issued for Design Pack	30/05/09	ML	DO

SCALE	ISSUING OFFICE	VALU	PROJECT NUMBER
A0 1:200		111	
STATUS	PURPOSE OF ISSUE		
D0	PLANNING ISSUE		
ORIGINATOR			

PROJECT  
HYDRUS

TITLE  
OPERATIONS BUILDING  
ELEVATIONS - SHEET 2

CLIENT  
AWE  
ALDERMASTON, READING  
BERKSHIRE, RG7 4PR

PROTECTIVE MARKING  
UNCLASSIFIED

AWE DRAWING REFERENCE NUMBER  
(FOR AWE OFFICE USE ONLY)

PROJECT DRAWING NUMBER  
A-HYDRUS-ATK-00-XX-DRW-AR-300-111-005046

DOC Rev  
6

DWG Rev  
6

