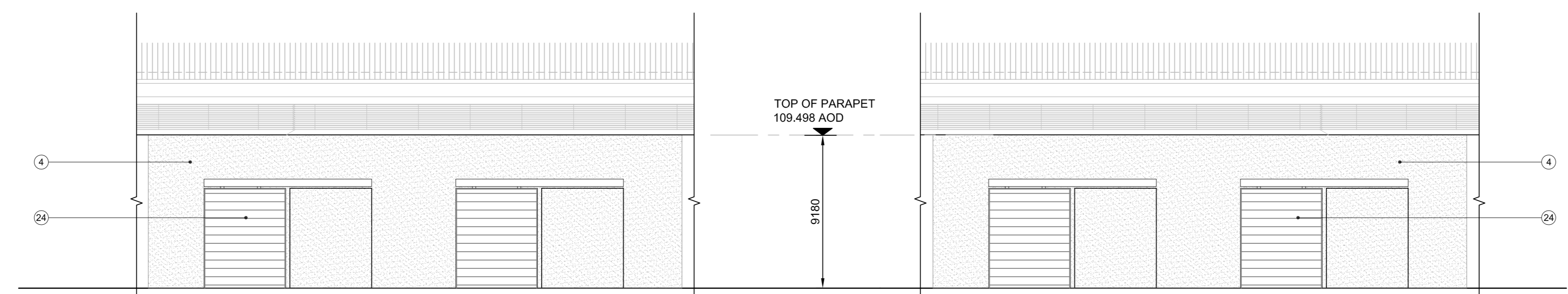
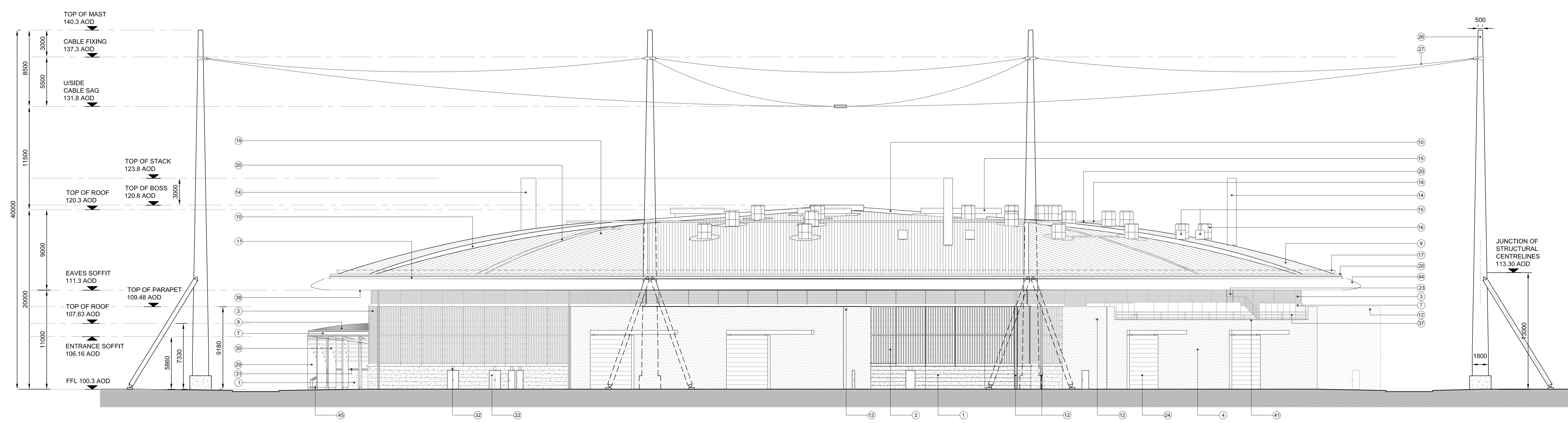


ELEVATION E
Scale: 1:200

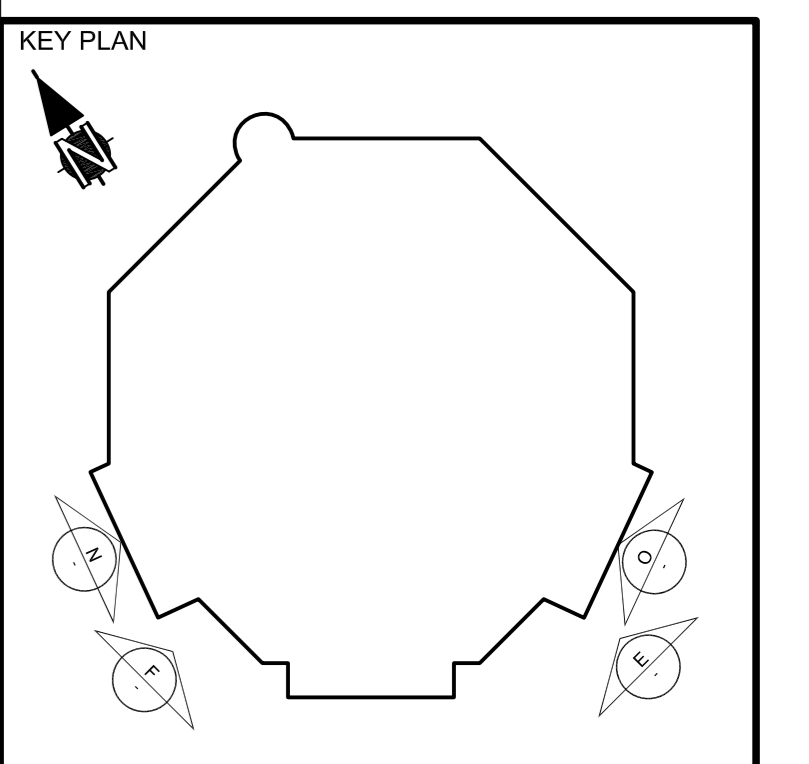
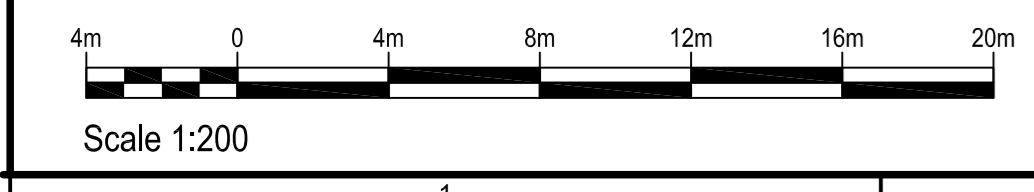


ELEVATION N
Scale: 1:200

ELEVATION O
Scale: 1:200



ELEVATION F
Scale: 1:200



SAFETY, HEALTH AND ENVIRONMENTAL INFORMATION

For details of relevant and general risks, to be read in conjunction with these drawings, see the following: HSE L113 (2002)

In addition to the risks normally associated with the types of work detailed on this drawing, note the following risks and information:

CONSTRUCTION
G

MAINTENANCE
M

For information relating to Use of Cleaning and repair Maintenance see the HSE F16 CLEANING/DEMOLITION (Fumes)

ENVIRONMENTAL
E

It is assumed that all works will be carried out by a competent contractor working, where appropriate, to an approved method statement.

NOTES

Routine maintenance access to the operation building roof will be via access stairs to the roof maintenance hatch and on to the roof mounted walkway. Operative safety to be secured using fall arrest latching system as indicated on the roof plan. A-HYDRUS-ATK-01-XX-DRW-AR-270-11-005044

- Key To Materials**
- 1) Reconstituted stone precast plinth colour grey with textured finish, and with single precast corner units and continuous horizontal strikes, top finishing in mill finished Aluminium, with vertical joints
 - 2) Timber rainscreen cladding (European Larch heartwood Grade 1, grown in UK) with vertical mill finish Aluminium tapered fins, and grain to timber protected with horizontal Aluminium battens. Back anodised support rails with cork insulation behind.
 - 3) Aluminium mill finish louvers
 - 4) White smooth synthetic render system
 - 5) Clear glazing in silver anodised Aluminium frames
 - 6) Insulated glass spandrel panels with textured clear glass outer pane and coloured inner pane in silver anodised Aluminium frames
 - 7) Roof edge upstand and fascia in grey anodised Aluminium
 - 8) Green roof to be planted with mixed solum species, in stone ballast
 - 9) Standing seam roof system in zinc coated Aluminium. Orientation of sheeting indicated by direction of lines on Roof plan
 - 10) Roof hip upstands in zinc coated Aluminium
 - 11) Gutter in mill finished Aluminium
 - 12) Rainwater outlets, overflow chutes and down pipes in galvanneal steel, colour finish
 - 13) Sunpipes for natural light, clear acrylic with Aluminium mill finish frames
 - 14) Exhaust stack with zinc cladding
 - 15) Roof ventilators in Aluminium mill finish
 - 16) Smoke ventilators in Aluminium mill finish
 - 17) Snowguard, cables and fittings in galvanneal steel
 - 18) Mansafe system in stainless steel
 - 19) Roof maintenance access hatch in Aluminium mill finish
 - 20) Roof maintenance walkways in Aluminium mill finish
 - 21) Brise soleil in silver anodised Aluminium
 - 22) Personnel doors, painted steel to match surrounding concrete plinth or render colour, as appropriate
 - 23) Louvre doors in Aluminium mill finish
 - 24) Loading bay doors, painted steel to match surrounding concrete plinth or render colour (grey or white), with matching overhead rail enclosure, where shown
 - 25) Sectional insulated door, painted grey
 - 26) Clear glazed door with silver anodised Aluminium frames
 - 27) Lighting protection masts white painted steel, with support struts and self finished reinforced concrete base
 - 28) Lighting protection system high level cable array, Aluminium cable with steel core. Connected at cross-over points and to the masts with natural finish non-ferrous node clamps
 - 29) Belfards painted steel, to match zinc roof colour
 - 30) Metal fins painted white to match lightning protection masts
 - 31) Metal radused tubes painted white, with bird wire
 - 32) Polished stainless steel handrail tubes
 - 33) External lighting
 - 34) Paving slabs in pre-cast concrete
 - 35) Single ply membrane roof finish, grey colour
 - 36) Precast base panels to match plinth above, 150mm
 - 37) Veneer glass, Aluminium mill finish
 - 38) Handrail with mesh screen in galvanneal steel
 - 39) Soffit of eaves to roof, grey painted Aluminium panels
 - 40) Aluminium, mill finished, vertical Aluminium fins
 - 41) Metal slot boards in mill finished Aluminium, the width to match adjacent timber cladding, concealing louvers behind
 - 42) Painted steel frame to match adjacent concrete plinth or render (grey or white) colour
 - 43) Clear polyurethane sheet canopy
 - 44) Galvanneal steel bicycle rack
 - 45) Roof edge profile in grey anodised Aluminium, with panels to radial geometry. Max panel length 1.5m with flush joints
 - 46) Yorkstone paved steps and landings
 - 47) Lighting protection system finial, mill finished aluminium - 1m
 - 48) Lighting protection system finial, mill finished aluminium - 1.5m

| REV | COMMENTS | DATE | BY | CHECKED |
|-----|--------------------|----------|----|---------|
| 4 | For Planning Issue | 30/04/10 | ML | DO |
| 3 | For Planning Issue | 12/01/10 | ML | DO |
| 2 | For Planning Issue | 04/12/09 | ML | DO |
| 1 | For Planning Issue | 03/11/09 | ML | DO |

REV COMMENTS DATE BY CHECKED

A0 1:200 ISSUING OFFICE VAL 1 PROJECT NUMBER 111

STATUS PURPOSE OF ISSUE
DO PLANNING ISSUE

ORIGINATOR

PROJECT
HYDRUS

TITLE
OPERATIONS BUILDING
ELEVATIONS - SHEET 3

CLIENT
AWE
ALDERMASTON, READING
BERKSHIRE, RG7 4PR

PROTECTIVE MARKING
UNCLASSIFIED

AWE DRAWING REFERENCE NUMBER
(FOR AWE OFFICE USE ONLY)

DOC Rev [DWS Rev]
- 4

PROJECT DRAWING NUMBER
A-HYDRUS-ATK-00-XX-DRW-AR-300-11-005049