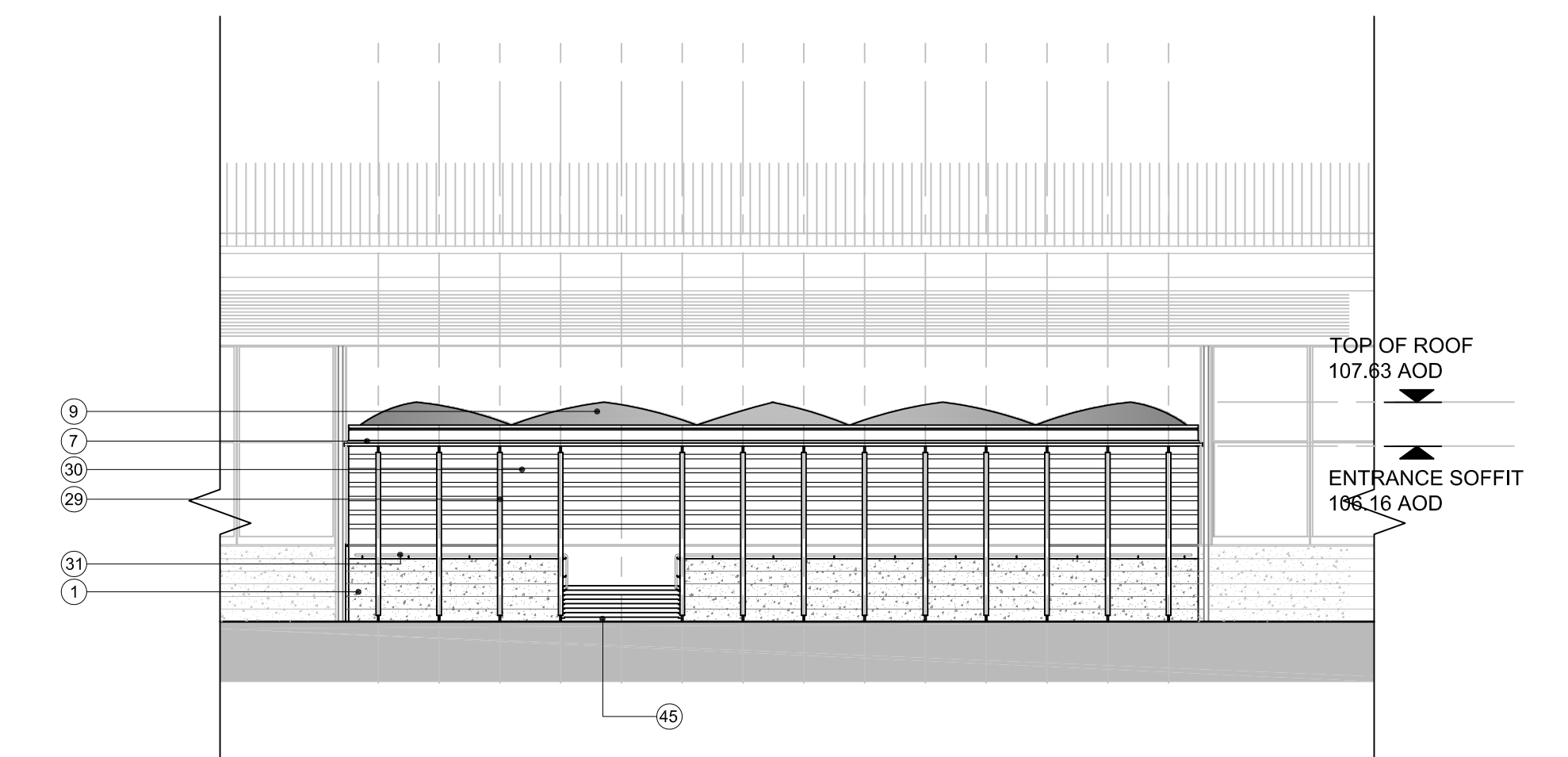
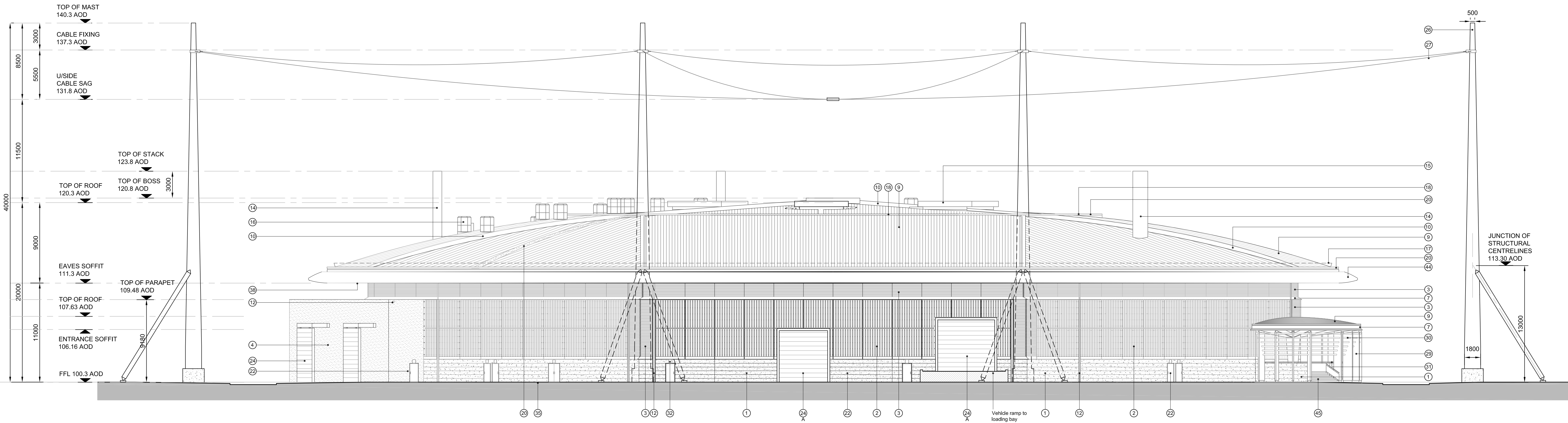


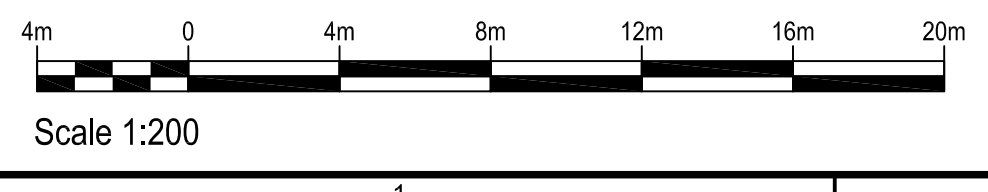
ELEVATION G
Scale: 1:200



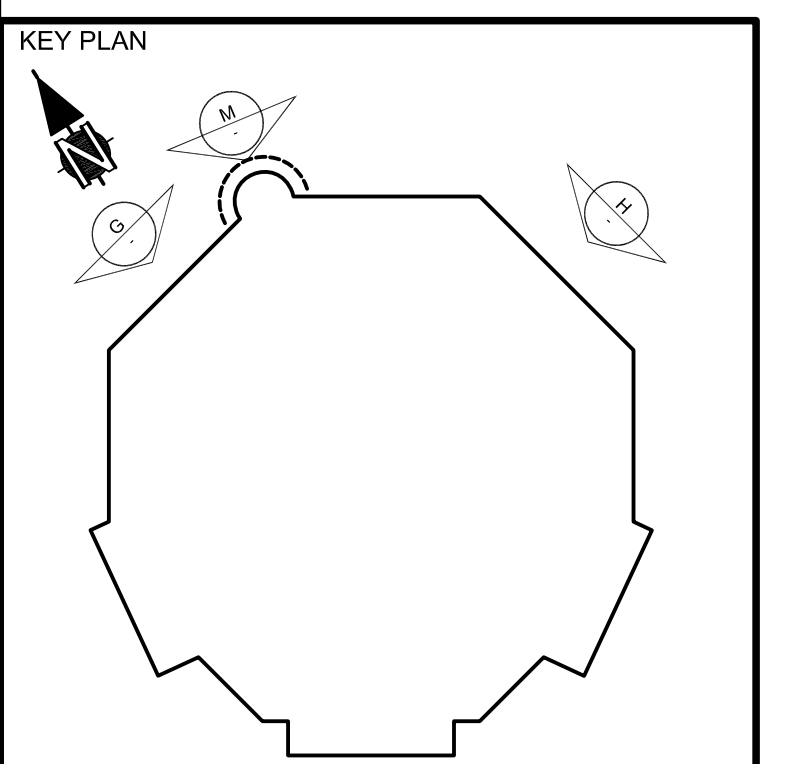
ELEVATION M
Scale: 1:200



ELEVATION H
Scale: 1:200



Scale 1:200



SAFETY HEALTH AND ENVIRONMENTAL INFORMATION
 For details of site-wide and general risks, to be read in conjunction with these notes, see the Risk Register for HYDRUS-ATK-01-111-005055.
 In addition to the risks normally associated with the types of work detailed on this drawing, note the following risks and information:
CONSTRUCTION
 F1
MAINTENANCE
 M1
 For information relating to Use of Cleaning and minor Maintenance see the H&S File: OSMANTUNG/ENCL001 (P/num)
ENVIRONMENTAL
 E1
 It is assumed that all works will be carried out by a competent contractor working, where appropriate, to an approved method statement.

NOTES
 Routine maintenance access to the operation building roof will be via access stairs to the roof maintenance hatch and on to the roof mounted walkway. Operative safety to be secured using fall arrest balchway system as indicated on the roof plan. A-HYDRUS-ATK-01-XX-DRW-AR-270-111-005044

- Key To Materials**
- 1 Reconstituted stone precast pith colour grey with textured finish, and with single precast corner units and continuous horizontal sills, top finishing in mill finished Aluminium, with vertical joints.
 - 2 Timber rainscreen cladding (European Larch heartwood Grade 1, grown in UK) with vertical mill finish Aluminium tapered fins, and grain to timber protected with horizontal Aluminium finishing. Black anodised support.
 - 3 Aluminium mill finish saviour.
 - 4 White smooth synthetic render system.
 - 5 Clear glazing in silver anodised Aluminium frames.
 - 6 Insulated glass spandrel panels with textured clear glass outer pane and coloured inner pane in silver anodised Aluminium frames.
 - 7 Roof edge capping and fascia in grey anodised Aluminium.
 - 8 Green roof to be planted with mixed sedum species, in stone ballast.
 - 9 Standing seam roof system in zinc coated Aluminium. Orientation of sheeting indicated by direction of lines on Roof plan.
 - 10 Roof hip upstands in zinc coated Aluminium.
 - 11 Gutter in mill finished Aluminium.
 - 12 Rainwater gutters, overflow chutes and down pipes in galvanneal steel, natural finish.
 - 13 Sunpipes for natural light, clear acrylic with Aluminium mill finish frames.
 - 14 Exhaust stacks with zinc cladding.
 - 15 Roof ventilators in Aluminium mill finish.
 - 16 Smoke ventilators in Aluminium mill finish.
 - 17 Snowguard, cables and fixings in galvanneal steel.
 - 18 Mansafe system in stainless steel.
 - 19 Roof maintenance access hatch in Aluminium mill finish.
 - 20 Roof maintenance walkways in Aluminium mill finish.
 - 21 Brise soleil in silver anodised Aluminium.
 - 22 Personnel doors, painted steel to match surrounding concrete pith or render colour, as appropriate.
 - 23 Louvre doors in Aluminium mill finish.
 - 24 Loading bay doors, painted steel to match surrounding concrete pith or render colour (grey or white), with matching overhead rail enclosure, where shown.
 - 25 Sectional insulated door, painted grey.
 - 26 Clear glazed doors with silver anodised Aluminium frames.
 - 27 Lighting protection masts white painted steel, with support struts and self-anchored reinforced concrete base.
 - 28 Lighting protection system high level cable tray, Aluminium cable with steel core. Connected at cross-over points and to the masts with natural finish continuous rods clamps.
 - 29 Bollards painted steel, to match zinc roof colour.
 - 30 Metal fins painted white to match lightning protection masts.
 - 31 Metal radius tubes painted white, with bird wire.
 - 32 Polished stainless steel handrail tubes.
 - 33 External lighting.
 - 34 Paving slabs in pre-cast concrete.
 - 35 Single ply membrane roof finish, grey colour.
 - 36 Precast base panels to match pith above, 150mm.
 - 37 Vent pipe, Aluminium mill finish.
 - 38 Handrail with mesh screen in galvanneal steel.
 - 39 Soffit of eaves to roof, grey painted Aluminium panels.
 - 40 Aluminium, mill finished, vertical Aluminium fins.
 - 41 Metal slat boards in mill finished Aluminium, the width to match adjacent timber cladding, concealing louvre behind.
 - 42 Painted steel frame to match adjacent concrete pith or render (grey or white) colour.
 - 43 Clear polyurethane sheet canopy.
 - 44 Galvanneal steel bicycle rack.
 - 45 Roof edge profile in grey anodised Aluminium, with panels to radial geometry. Max panel board length 1.5m with flush joints.
 - 46 Yorkstone paved steps and landings.
 - 47 Lighting protection system finial, mill finished aluminium - 1m.
 - 48 Lighting protection system finial, mill finished aluminium - 1.5m.

REV	COMMENTS	DATE	DRAWN	CHECKED
4	For Planning Issue	30/04/10	ML	DO
3	Draw Location Annots	13/01/10	ML	DO
2	For Planning Issue	04/10/09	ML	DO
1	For Planning Pack	03/11/09	ML	DO

SCALE	ISSUING OFFICE	VALUET	PROJECT NUMBER
A0 1:200		111	

STATUS: D0
 PURPOSE OF ISSUE: PLANNING ISSUE
 ORIGINATOR:
 PROJECT: HYDRUS
 TITLE: OPERATIONS BUILDING ELEVATIONS - SHEET 4
 CLIENT: AWE ALDERMASTON, READING BERKSHIRE, RG7 4PR
 PROTECTIVE MARKING: UNCLASSIFIED
 AWE DRAWING REFERENCE NUMBER (FOR AWE OFFICE USE ONLY):
 PROJECT DRAWING NUMBER: A-HYDRUS-ATK-00-XX-DRW-AR-300-111-005055