

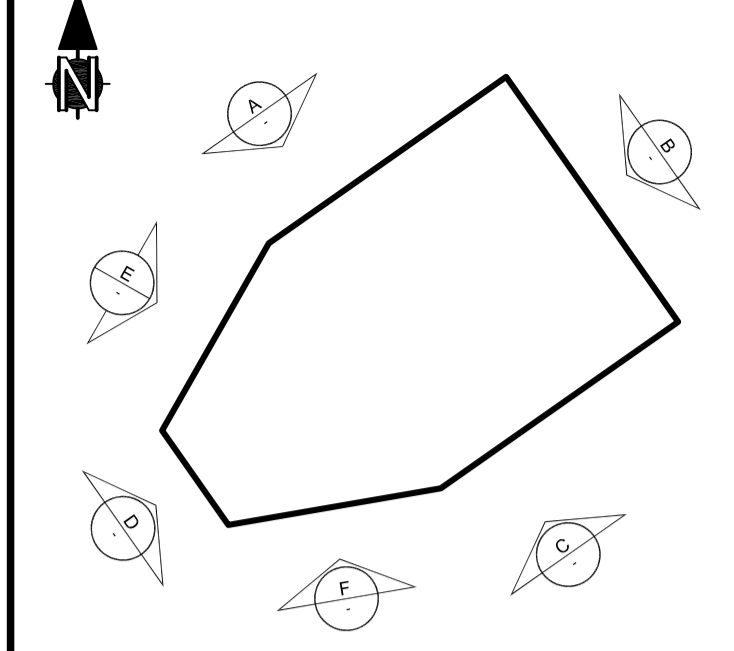
**SAFETY, HEALTH AND ENVIRONMENTAL INFORMATION**

Maintenance access to 'green' roof surface will be by aerial work platform, at intervals of 6 months. Operative safety to be secured using fall arrest latchway system, as indicated on the roof plan, 'A-HYDRUS-ATK-60-XX-DRW-AR-270-111-005708'

**Key To Materials**

- 1 Reconstituted stone precast plinth colour grey with textured finish, and with single precast corner units and continuous horizontal strikes, top flashing in mill finished Aluminium, with vertical joints
- 2 Timber rainscreen cladding (European Larch heartwood Grade 1, grown in UK) with vertical mill finish Aluminium tapered fins, end grain to timber protected with horizontal Aluminium flashings. Black anodised support rails with cork insulation behind.
- 3 Aluminium mill finish louvers
- 4 White smooth synthetic render system
- 5 Clear glazing in silver anodised Aluminium frames
- 6 Insulated glass spandrel panels with textured clear glass outer pane and coloured inner pane in silver anodised Aluminium frames
- 7 Roof edge upstand and fascia in grey anodised Aluminium.
- 8 Green roof to be planted with mixed sedum species, in stone ballast with single precast corner units and continuous horizontal strikes, top flashing in mill finished Aluminium, with vertical joints
- 9 Standing seam roof system in zinc coated Aluminium. Orientation of sheeting indicated by direction of lines on Roof plan
- 10 Roof hip upstands in zinc coated Aluminium.
- 11 Gutter in mill finished Aluminium
- 12 Rainwater outlets, overflow chutes and down pipes in galvanised steel, natural finish
- 13 Sunpipes for natural light, clear acrylic with Aluminium mill finish frames
- 14 Exhaust stack with zinc cladding
- 15 Roof ventilators in Aluminium mill finish
- 16 Smoke ventilators in Aluminium mill finish
- 17 Snowguard, cables and fixings in galvanised steel
- 18 Mansafe system in stainless steel
- 19 Roof maintenance access hatch in Aluminium mill finish
- 20 Roof maintenance walkways in Aluminium mill finish
- 21 Brise soleil in silver anodised Aluminium
- 22 Personnel doors, painted steel to match surrounding concrete plinth or render colour, as appropriate
- 23 Louvre doors in Aluminium mill finish
- 24 Loading bay doors, painted steel to match surrounding concrete plinth or render colour (grey or white), with matching overhead rail enclosure, where shown
- 25 Sectional insulated door, painted grey
- 26 Clear glazed doors with silver anodised Aluminium frames
- 27 Lightning protection masts white painted steel, with support struts and self-finished reinforced concrete base
- 28 Lightning protection system high level cable array, Aluminium cable with steel core. Connected at cross-over points and to the masts with natural finish non-ferrous node clamps
- 29 Bollards painted steel, to match zinc roof colour
- 30 Metal fins painted white to match lightning protection masts
- 31 Metal radiused tubes painted white, with bird wire
- 32 Polished stainless steel handrail tubes
- 33 External lighting
- 34 Paving slabs in pre-cast concrete
- 35 Single ply membrane roof finish, grey colour
- 36 Precast base panels to match plinth above, 150mm
- 37 Vent pipe, Aluminium mill finish
- 38 Handrail with mesh screen in galvanised steel
- 39 Soffit of eaves to roof, grey painted Aluminium panels
- 40 Aluminium, mill finished, vertical Aluminium fins
- 41 Metal slat boards in mill finished Aluminium, the width to match adjacent timber cladding, concealing louvers behind
- 42 Painted steel frame to match adjacent concrete plinth or render (grey or white) colour
- 43 Clear polyurethane sheet canopy
- 44 Galvanised steel bicycle rack
- 45 Roof edge profile in grey anodised Aluminium, with panels to radial geometry. Max panel facet length 1.5m with flush joints
- 46 Yorkstone paved steps and landings
- 47 Lightning protection system finial, mill finished aluminium - 1m
- 48 Lightning protection system finial, mill finished aluminium - 1.5m

**KEY PLAN**



**SAFETY, HEALTH AND ENVIRONMENTAL INFORMATION**

For details of site-wide and general risks, to be read in conjunction with these notes, see 'Drop/Reel No'

In addition to the risks normally associated with the types of work detailed on this drawing, note the following risks and information

**CONSTRUCTION**

Cl

**MAINTENANCE**

Mi

For information relating to Use of Cleaning and minor Maintenance see the H&S File

**DISMANTLING/DEMOLITION (Future)**

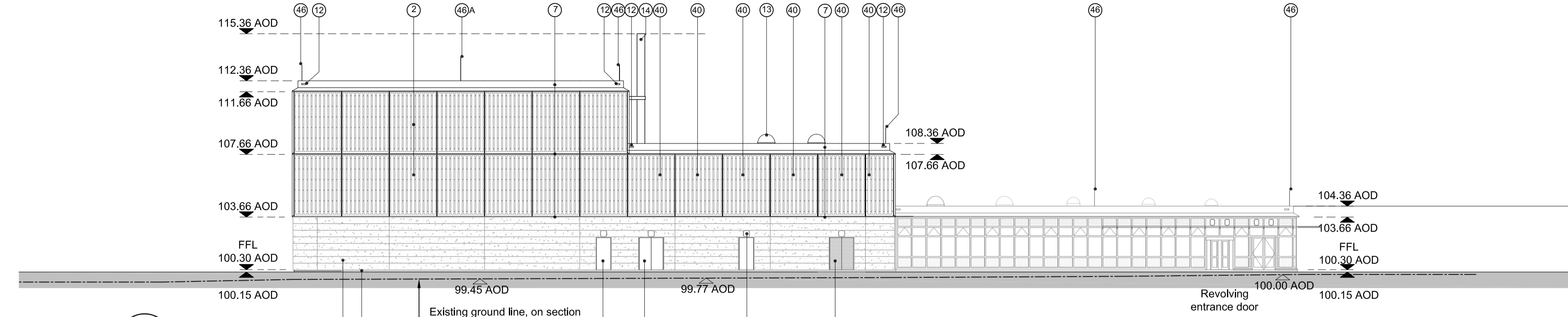
Di

**ENVIRONMENTAL**

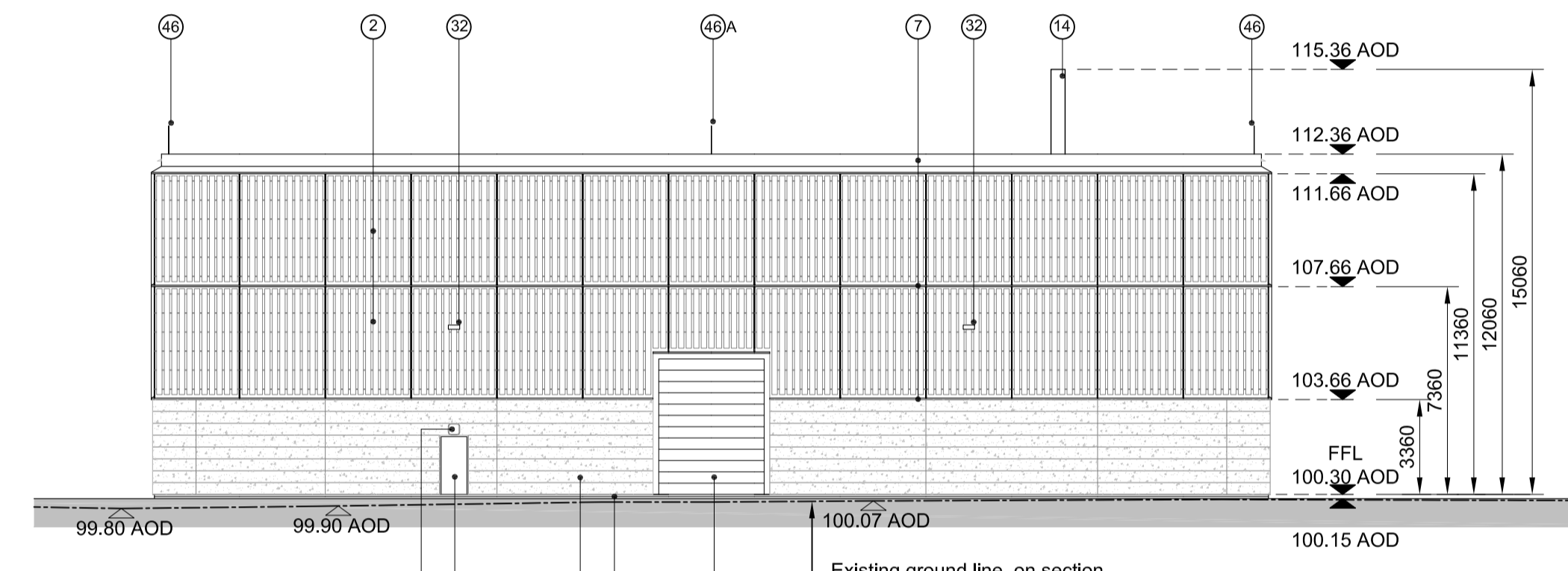
Ei

It is assumed that all works will be carried out by a competent contractor working, where appropriate, to an approved method statement.

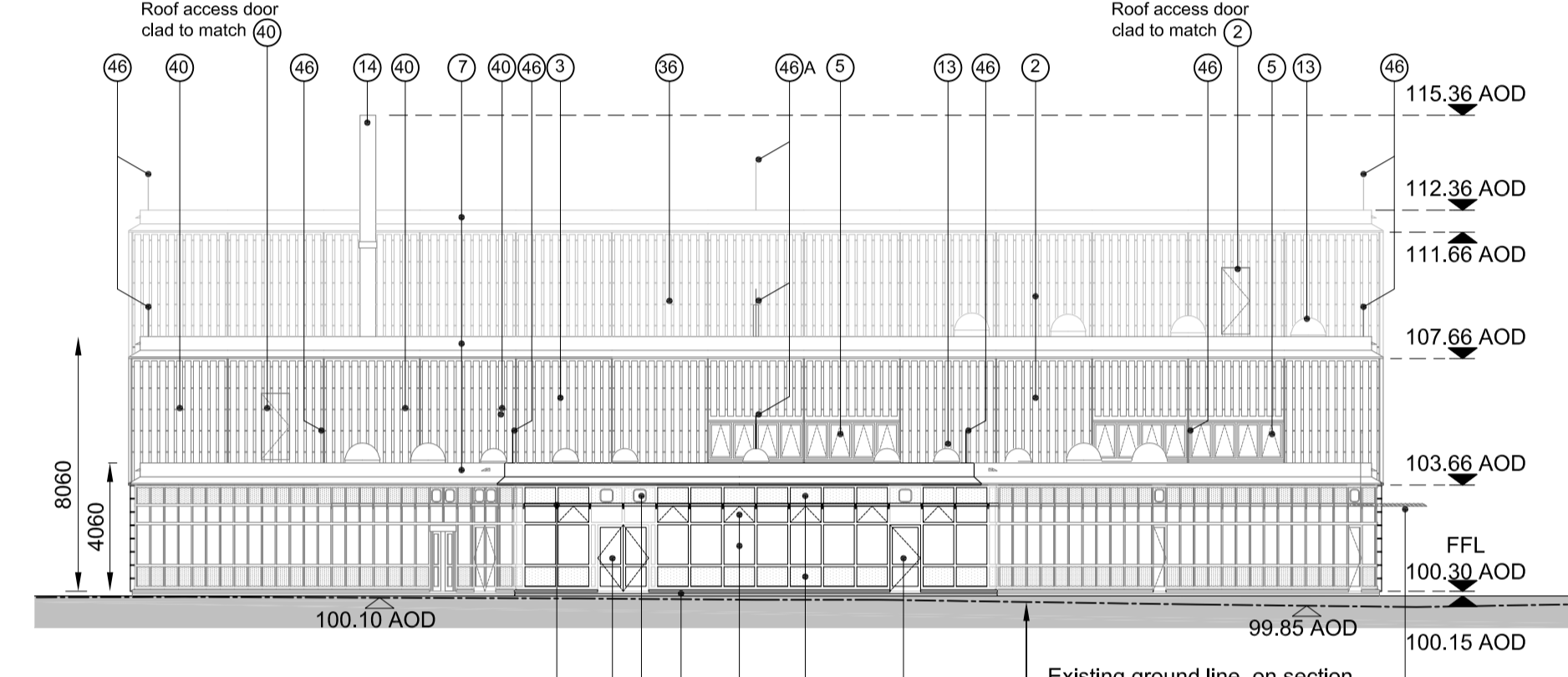
**NOTES**



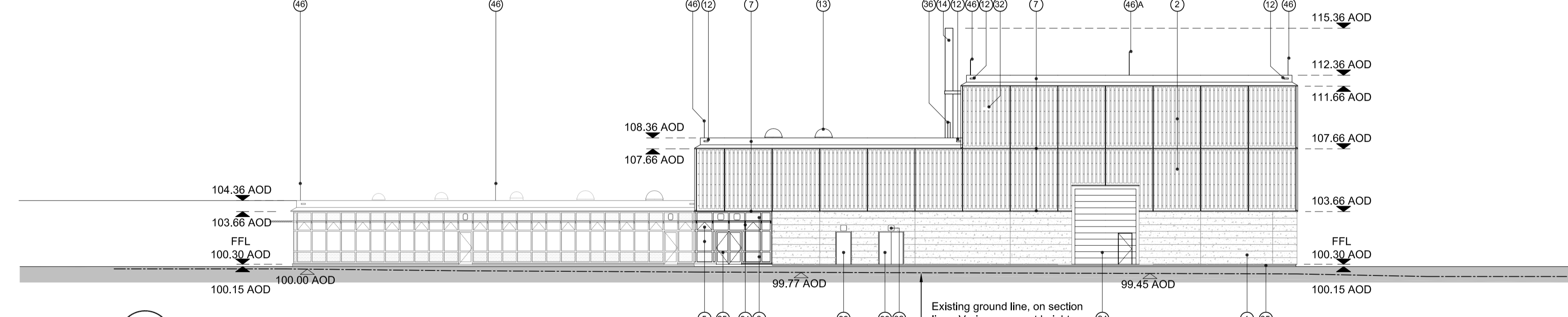
**ELEVATION A**  
Scale: 1:200



**ELEVATION B**  
Scale: 1:200

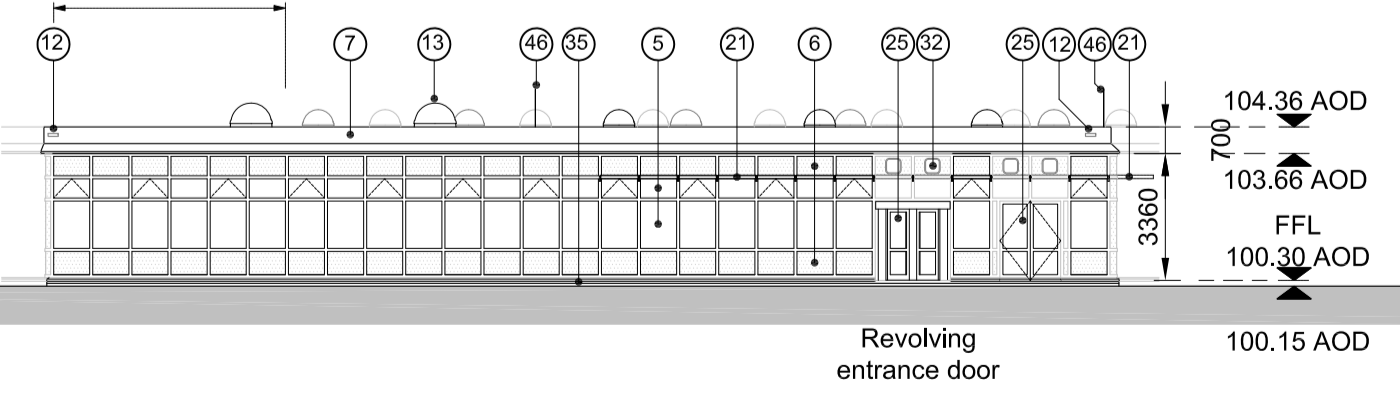


**ELEVATION D**  
Scale: 1:200

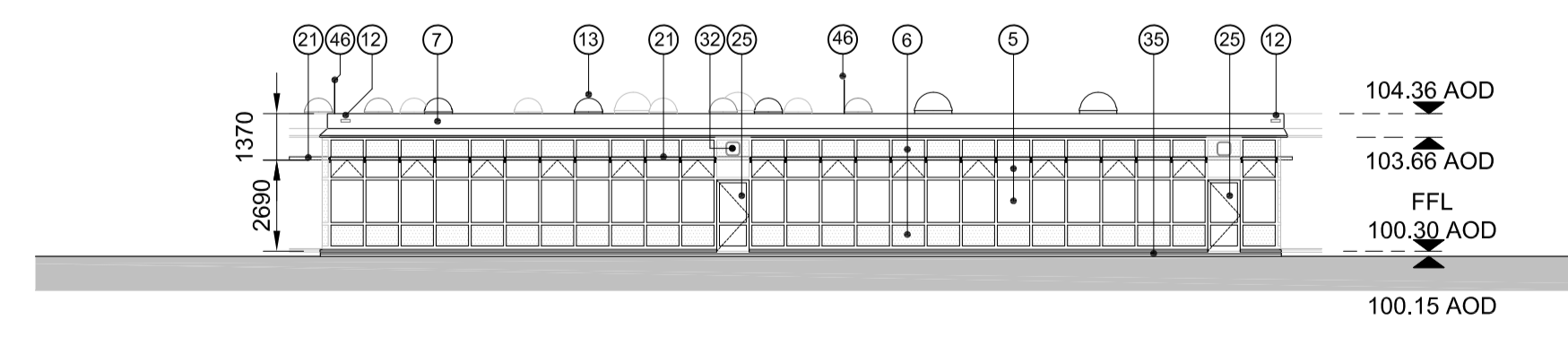


**ELEVATION C**  
Scale: 1:200

Tinted film applied to inside of glazing and sunpipes in this zone



**ELEVATION E**  
Scale: 1:200



**ELEVATION F**  
Scale: 1:200



Scale 1:200

REV	COMMENTS	DATE	DRWN	CHKD
7	For Planning Issue	30/04/10	ML	DO
6	For Planning Issue	13/01/10	ML	DO
5	Baseline Design Pack	18/12/09	KJ	DO
4	For Planning Issue	04/12/09	ML	DO
3	For Planning Pack	03/11/09	ML	DO
2	For Planning Pack	01/09/09	ML	DO
1	For Planning Pack	30/06/09	ML	DO

REV	SCALES	ISSUING OFFICE	VAULT	PROJECT NUMBER
A1	1:200		111	

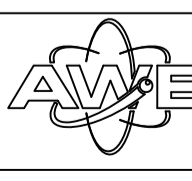
STATUS	PURPOSE OF ISSUE
DO	PLANNING ISSUE

ORIGINATOR

PROJECT  
HYDRUS

TITLE  
SUPPORT BUILDING  
ELEVATIONS

CLIENT  
AWE  
ALDERMASTON, READING  
BERKSHIRE, RG7 4PR



PROTECTIVE MARKING  
UNCLASSIFIED

AWE DRAWING REFERENCE NUMBER (FOR AWE OFFICE USE ONLY)	DOC Rev	DWG Rev
	-	7

PROJECT DRAWING NUMBER  
A-HYDRUS-ATK-50-XX-DRW-AR-300-111-005707