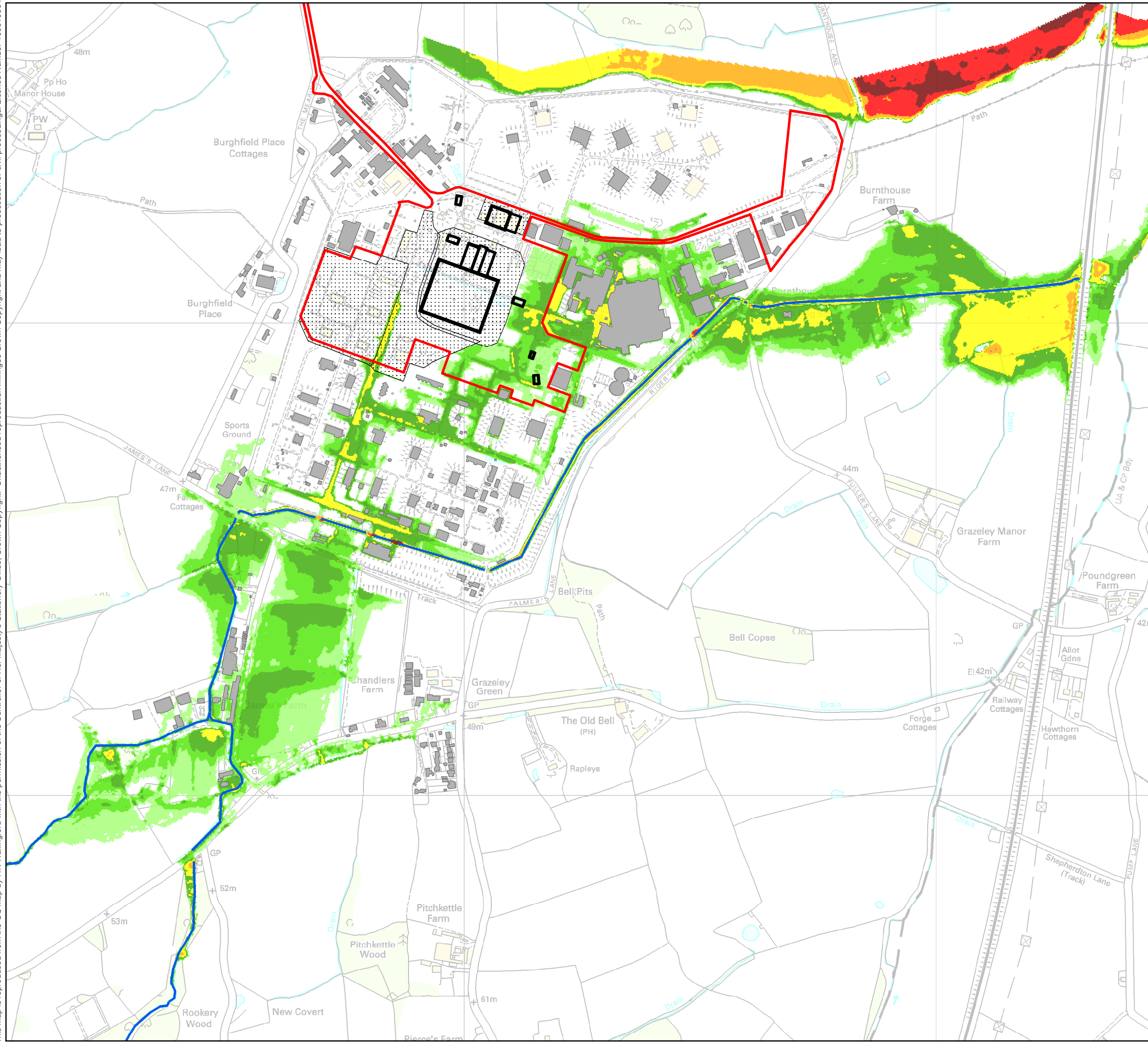


This map is reproduced from the OS map with the permission of the Controller of Her Majesty's Stationery Office. Unauthorised reproduction infringes Crown Copyright and may lead to prosecution or civil proceedings. Licence Number: 100019904

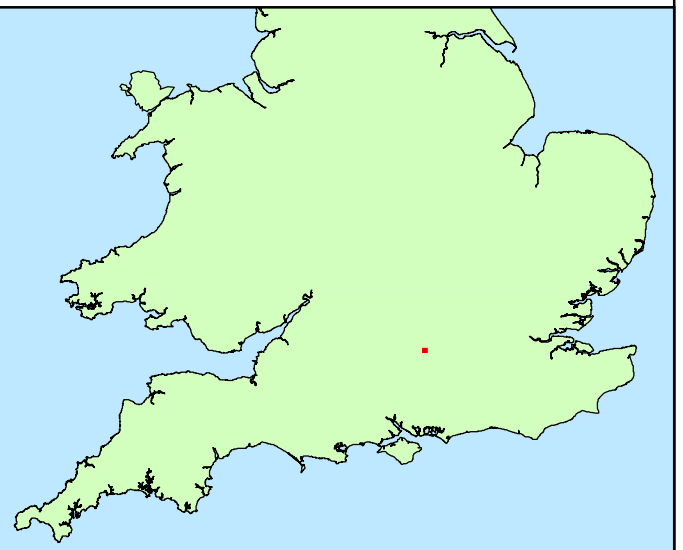
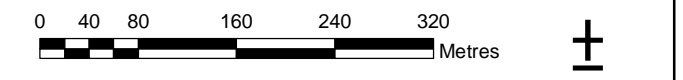


Legend

- Red Line Boundary
 - Mensa building outlines
 - Building outlines
 - Updated levels
 - Current Watercourse
- 100-year - 5.75 hr storm (winter) (+20% climate change)**
Max flood depth (m)
- 0 - 0.1
 - 0.1 - 0.25
 - 0.25 - 0.5
 - 0.5 - 1
 - 1.0 - 1.5
 - 1.5 - 2.0
 - >2.0

Notes

Fluvial flooding
 Model reference: bu2_670d
 © HR Wallingford Ltd. 2008



Project: MAR4015



Title: Burghfield flood study
 Sub-Title: Mensa Flood Risk Assessment Figure A4 -
 Post development fluvial 1 in 100 year
 (plus climate change) flood depths

Map Number:
 2008-12-20_FloodMap_Depth_Ref670d.mxd

Date: 2008-12-20