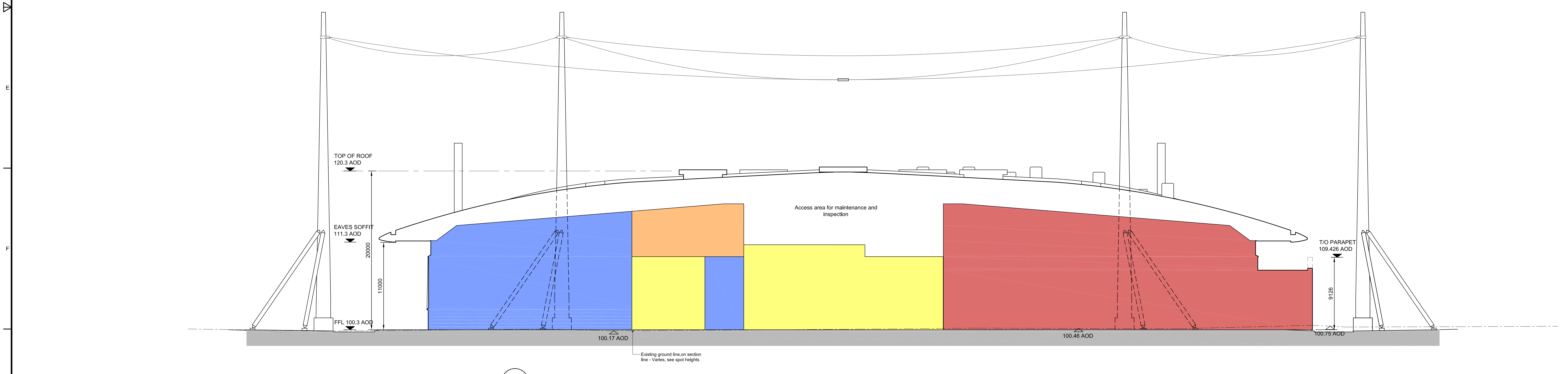
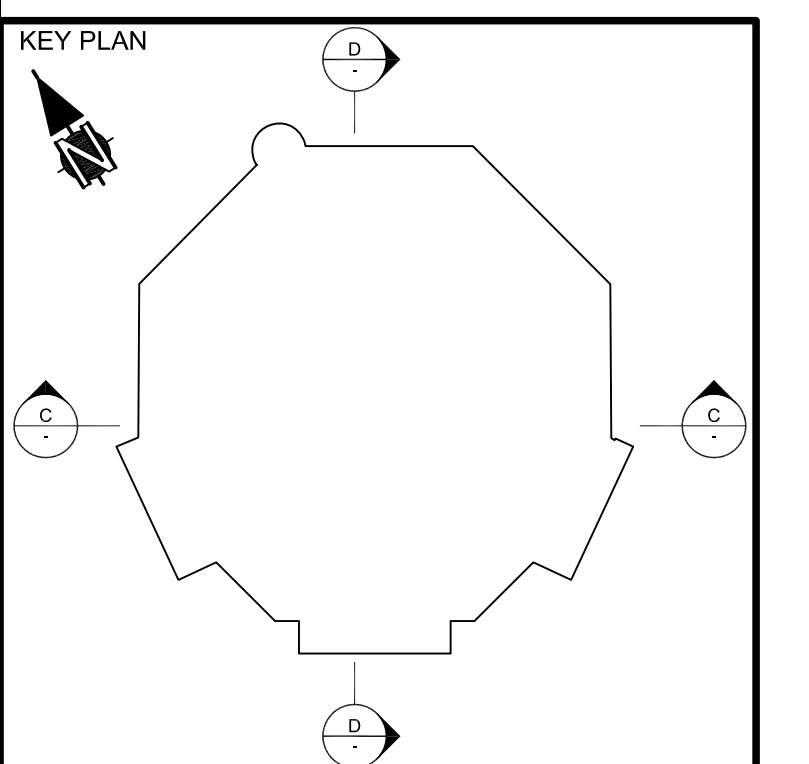
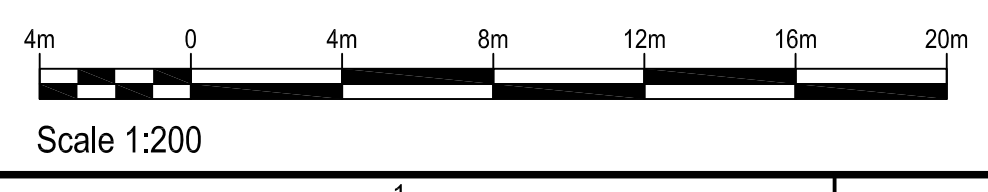


SECTION C  
Scale: 1:200  
005052



SECTION D  
Scale: 1:200  
005052



**SAFETY HEALTH AND ENVIRONMENTAL INFORMATION**

For details of Materials and general risks, to be read in conjunction with these notes, see Drawings No. HYDRUS-ATK-00-000001-000001.

In addition to the risks normally associated with the types of work detailed on this drawing, see the following risks and information:

CONSTRUCTION	C
MAINTENANCE	M
DEMANTLING/DEMOLITION (Future)	D
ENVIRONMENTAL	E1

It is assumed that all works will be carried out by a competent contractor working, where appropriate, to an approved method statement.

**NOTES**

Notes area containing project-specific information and instructions.

**FUNCTIONALITY KEY**

INDUSTRIAL	PLANT	LABORATORY	PERSONNEL	WASTE
------------	-------	------------	-----------	-------

4	For Planning Issue	30/04/10	ML	DO
3	For Planning Issue	13/01/10	ML	DO
2	For Planning Issue	04/10/09	ML	DO
1	For Planning Pack	03/11/09	ML	DO

REV	COMMENTS	SCALE	ISSUING OFFICE	DATE	DRAWN	CHECKED	PROJECT NUMBER
A0		1:200		111			

STATUS: DO  
PURPOSE OF ISSUE: PLANNING ISSUE

ORIGINATOR:

PROJECT: HYDRUS

TITLE: OPERATIONS BUILDING SECTIONS SHEET 2 FUNCTIONALITY

CLIENT: AWE ALDERMASTON, READING BERKSHIRE, RG7 4PR

PROTECTIVE MARKING: UNCLASSIFIED

AWE DRAWING REFERENCE NUMBER: (FOR AWE OFFICE USE ONLY)  
DOC Rev: 4

PROJECT DRAWING NUMBER: A-HYDRUS-ATK-00-XX-DRW-AR-300-111-005052

