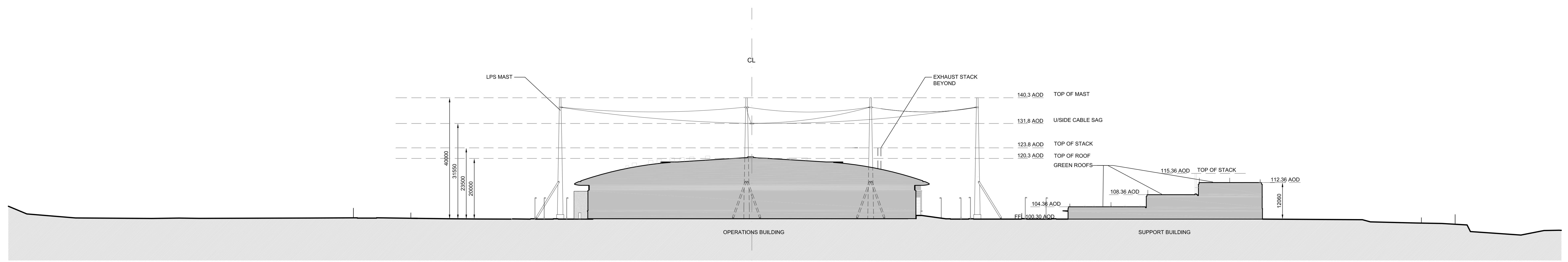


**SAFETY, HEALTH AND ENVIRONMENTAL INFORMATION**  
 For details of the risks and general risks, to be read in conjunction with these notes, see the Health and Safety File (HSF) and the SHE Statement.  
 In addition to the risks normally associated with the type of work detailed on this drawing, note the following risks and information:  
**CONSTRUCTION**  
 N/A  
**MAINTENANCE**  
 N/A  
 For information relating to Use of Cleaning and minor Maintenance see the HSE File (DISMANTLING/DEMOLITION (if applicable))  
**ENVIRONMENTAL**  
 N/A  
 It is assumed that all works will be carried out by a competent contractor working, where appropriate, to an approved method statement.

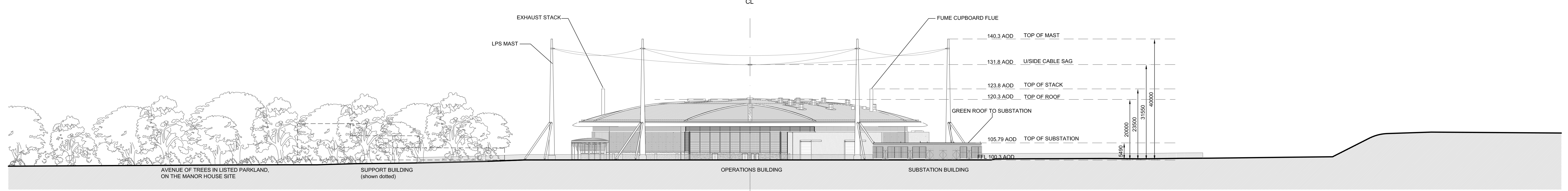
**NOTES**  
 - All soft landscaping shown is provided by the landscaping consultant



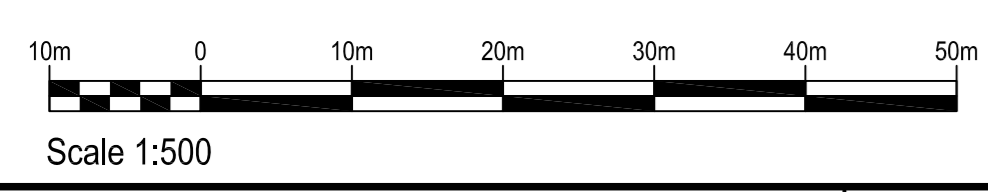
SECTION A  
 Scale: 1:500



SECTION B  
 Scale: 1:500



ELEVATION A  
 Scale: 1:500



Note:  
 Drawing revised following instruction from AWE to change protective marking to unclassified. (ref. Richard Reeves email dated 25 June 2009, 12:36 to Chris Moore).

REV	COMMENTS	DATE	DRAWN	CHECKED
6	For Planning Issue	04/04/10	ML	DO
5	For Planning Issue - Amended Levels	21/01/10	ML	DO
4	For Planning Issue	12/01/10	ML	DO
3	For Planning Issue	04/12/09	ML	DO
2	For Planning Issue	01/09/09	ML	DO
1	Issue for Design	30/09/09	ML	DO

REV	COMMENTS	DATE	DRAWN	CHECKED
A0	1:500			

STATUS	PURPOSE OF ISSUE	ISSUING OFFICE	VAULT	PROJECT NUMBER
D0	PLANNING ISSUE		111	

PROJECT  
 HYDRUS  
 TITLE  
 SITE SECTIONS AND ELEVATIONS

CLIENT  
 AWE  
 ALDERMASTON, READING  
 BERKSHIRE, RG7 4PR  
 UNCLASSIFIED  
 PROTECTIVE MARKING  
 UNCLASSIFIED  
 AWE DRAWING REFERENCE NUMBER  
 (FOR AWE OFFICE USE ONLY)  
 PROJECT DRAWING NUMBER  
 A-HYDRUS-ATK-09-XX-DRW-AR-800-111-005004



DOC Rev 010 Rev 6